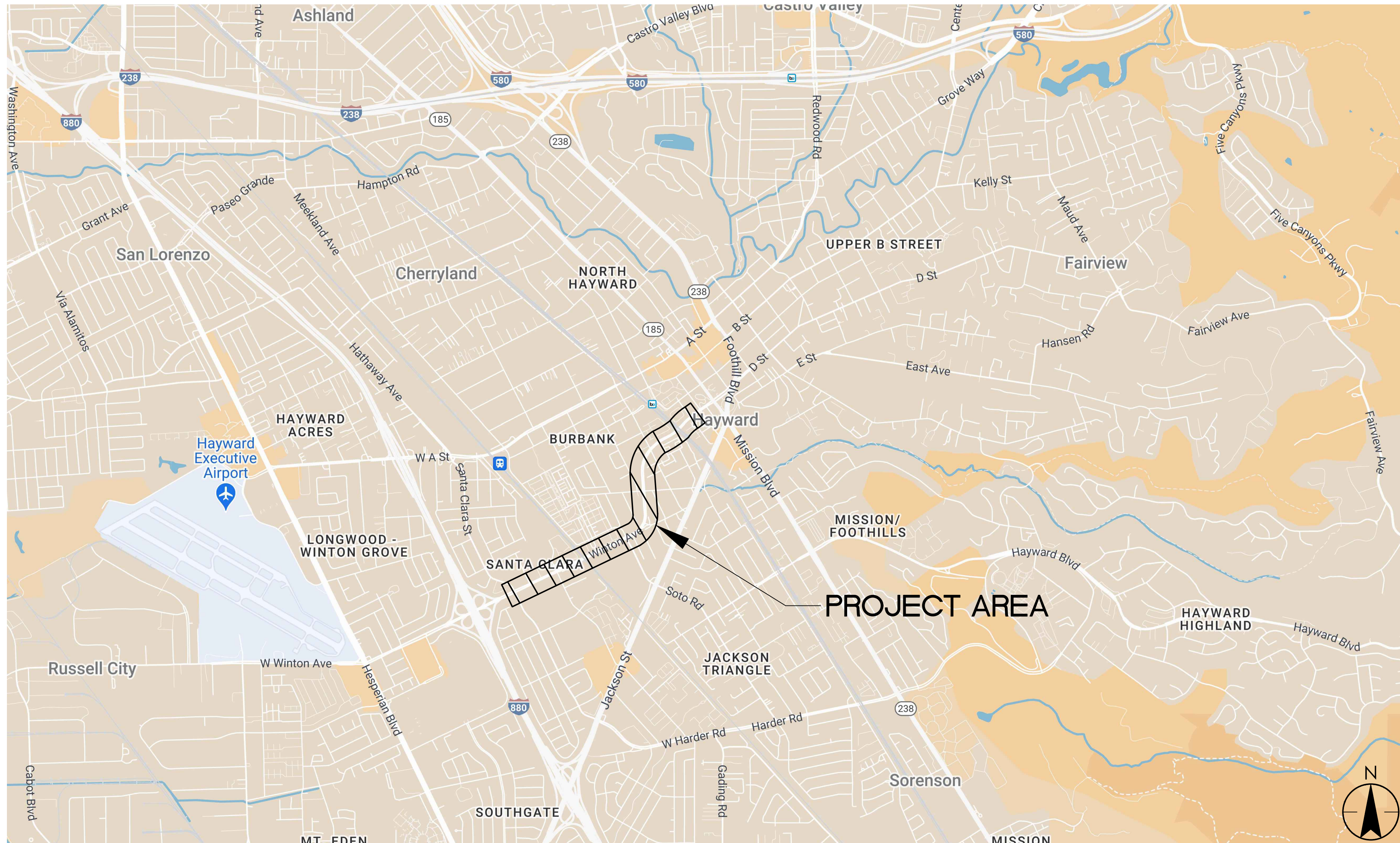


CITY OF HAYWARD

TENNYSON RD & WINTON AVE SIGNAL COORDINATION PROJECT



SHEET No.	DESCRIPTION
1	TITLE SHEET & LOCATION MAP
2	PROJECT NOTES & LEGENDS
3	SANTA CLARA ST & W WINTON AVE INTERSECTION
4	AMADOR ST & W WINTON AVE AND MYRTLE ST & D ST INTERSECTIONS
5	D ST & W WINTON AVE AND MEEK AVE & D ST INTERSECTIONS
6	GRAND ST & D ST AND ATHERTON ST & D ST INTERSECTIONS
7	FIBER SPLICING DIAGRAM 1
8	FIBER SPLICING DIAGRAM 2
9	FIBER SPLICING DIAGRAM 3

NOTES:

- ALL EXISTING UTILITIES WERE PLOTTED FROM RECORD INFORMATION AND FIELD TOPOGRAPHY. ACTUAL LOCATIONS MAY VARY AND ADDITIONAL CROSSINGS MAY EXIST IN THE FIELD. IT IS IMPERATIVE THAT U.S.A. LOCATING SERVICES LOCATE AND MARK EXISTING UTILITIES PRIOR TO THE START OF EXCAVATION.
- THE CONTRACTOR SHALL USE EXTREME CAUTION WHEN EXPOSING EXISTING UTILITY CROSSINGS AND SERVICES.
- ANY DAMAGE TO EXISTING UTILITIES WILL BE THE SOLE RESPONSIBILITY OF THE CONTRACTOR.



Know what's below.
Call before you dig.



ADVANCED MOBILITY GROUP

3003 OAK ROAD, SUITE 100
WALNUT CREEK, CA 94597

DESIGNED	R.SABINIANO				
DRAWN	R.SABINIANO				
CHECKED	S.YARI				
DATE	02/07/2025				
SCALE	N/A		REVISION	BY	APP.

BENCHMARK

N/A

TENNYSON RD & WINTON AVE SIGNAL COORDINATION PROJECT

CITY PROJECT NUMBER: 05342 & TFCA PROJECT NUMBER: 24ALA05

TITLE SHEET & LOCATION MAP



KATHY GARCIA
DEPUTY DIRECTOR OF PUBLIC WORKS

R.C.E. NO. 51984
EXPIRES 9-30-2026



ALEX AMERI
DIRECTOR OF PUBLIC WORKS

R.C.E. NO. 40155
EXPIRES 9-30-2026

PJ NO.

SHEET 01 OF 09

DWG.

GENERAL NOTES:

1.

THE CONTRACTOR SHALL COMPLY WITH ALL STATE, COUNTY, AND CITY LAWS AND ORDINANCES RELATING TO SAFETY AND CHARACTER OF WORK, EQUIPMENT AND LABOR PERSONNEL.
2.

PRIOR TO ANY UNDERGROUND WORK, THE CONTRACTOR SHALL VERIFY THE EXACT LOCATION OF EXISTING UTILITIES AND SHALL NOTIFY UNDERGROUND SERVICE ALERT (USA) AT (800) 227-2600 TWO WORKING DAYS PRIOR TO COMMENCEMENT OF EXCAVATION.
3.

CONTRACTOR SHALL POTHOLE ALL UTILITY CROSSINGS OF PROPOSED CONDUIT ALIGNMENT.
4.

NO MATERIAL OR EQUIPMENT SHALL BE STORED OVERNIGHT IN PUBLIC RIGHT OF WAY.
5.

THE CONTRACTOR SHALL MAINTAIN ACCESS TO ALL PROPERTY ADJACENT TO THE WORK THROUGHOUT THE PERIOD OF CONSTRUCTION.
6.

THE CONTRACTOR IS RESPONSIBLE FOR ARRANGING FOR ALL REQUIRED INSPECTIONS. THE PRESENCE OR ABSENCE OF A CITY OR OTHER INSPECTOR WILL NOT RELIEVE THE CONTRACTOR OF FULL RESPONSIBILITY FOR THE PROPER PERFORMANCE OF THE WORK.
7.

ANY CONFLICTS WITH THE DESIGN OR ANY CHANGES TO THE PLANS SHALL BE SUBMITTED TO THE DESIGN ENGINEER AND AUTHORIZED BY THE CITY BEFORE CONTINUING WITH THE WORK IN THAT AREA. MAJOR CHANGES SHALL REQUIRE A PLAN REVISION AND MINOR CHANGES SHALL REQUIRE A PLAN CHANGE AUTHORIZATION BY THE CITY.
8.

THE CONTRACTOR SHALL REMOVE AND DISPOSE OF OR RECYCLE ALL SURPLUS EXCAVATION, MATERIALS AND DEBRIS FROM THE SITE AND SHALL MAINTAIN THE SITE IN A NEAT AND ORDERLY CONDITION.
9.

ANY PUBLIC OR PRIVATE PROPERTY DAMAGED BY THE CONTRACTOR OR ANY SUBCONTRACTOR SHALL BE RESTORED TO ITS ORIGINAL CONDITION AT THE CONTRACTOR'S EXPENSE. ALL PUBLIC IMPROVEMENTS FOR THE PROJECT THAT ARE DAMAGED OR DISPLACED SHALL BE REPAIRED OR REPLACED BY THE CONTRACTOR AT THEIR EXPENSE PRIOR TO ACCEPTANCE BY THE CITY.
10.

THE CONTRACTOR SHALL PROVIDE ALL LIGHTS, SIGNS, BARRICADES, FLAGGERS AND OTHER DEVICES TO PROVIDE VEHICULAR, BICYCLE, AND PEDESTRIAN SAFETY.
11.

CONTRACTOR SHALL PROTECT ALL UTILITY STRUCTURES AND SURVEY MONUMENTS WITHIN THE WORK AREAS. THE CONTRACTOR SHALL REVIEW THE WORK SITES PRIOR TO SUBMISSION OF BIDS.
12.







CONTRACTOR SHALL RESTORE ALL FACILITIES OUTSIDE LIMITS OF WORK DAMAGED BY CONSTRUCTION OPERATIONS TO THEIR ORIGINAL CONDITION AT NO ADDITIONAL COST TO THE CITY. ANY DAMAGE TO THE EXISTING FACILITIES INCLUDING, BUT NOT LIMITED TO: TREES, LANDSCAPING, IRRIGATION, STORM, SEWER, UTILITY SERVICES, FENCES, WALLS, SIDEWALK, AND PAVEMENT SURFACE SHALL BE RESTORED AT CONTRACTOR'S EXPENSE.
13.

TRAFFIC CONTROL DURING CONSTRUCTION SHALL BE THE CONTRACTOR'S RESPONSIBILITY AND IN ACCORDANCE WITH THE CONTRACT DOCUMENTS. THE CONTRACTOR SHALL SUBMIT A WRITTEN TRAFFIC CONTROL & SIGNING PLAN TO THE ENGINEER PRIOR TO THE PRE-CONSTRUCTION MEETING. NO COMPLETE ROAD CLOSURES WILL BE ALLOWED.
14.

LOCATIONS OF EXISTING CONTROLLER, CONDUITS, PULL BOXES, AND OTHER EQUIPMENT ARE APPROXIMATE. CONTRACTOR SHALL VERIFY ALL EQUIPMENT IN FIELD PRIOR TO ANY WORK.
15.

CONTRACTOR SHALL CONDUCT CCTV INSPECTION OF THE UTILITY CROSSING (SEWER / STORM DRAIN) BEFORE AND AFTER CONSTRUCTION TO ENSURE IT REMAINS UNDAMAGED DURING BORING/HDD.

LEGEND

EXISTING		PROPOSED	
	SIGNAL CABINET		
	PULL BOX		
	CONDUIT		

NOTES:

1.

ALL EXISTING UTILITIES WERE PLOTTED FROM RECORD INFORMATION AND FIELD TOPOGRAPHY. ACTUAL LOCATIONS MAY VARY AND ADDITIONAL CROSSINGS MAY EXIST IN THE FIELD. IT IS IMPERATIVE THAT "U.S.A. LOCATING SERVICES" LOCATE AND MARK EXISTING UTILITIES PRIOR TO THE START OF EXCAVATION.
2.

THE CONTRACTOR SHALL USE EXTREME CAUTION WHEN EXPOSING EXISTING UTILITY CROSSINGS AND SERVICES.
3.

ANY DAMAGE TO EXISTING UTILITIES WILL BE THE SOLE RESPONSIBILITY OF THE CONTRACTOR.



Know what's below.
Call before you dig.



ADVANCED MOBILITY GROUP

3003 OAK ROAD, SUITE 100
WALNUT CREEK, CA 94597

DESIGNED	R.SABINIANO					
DRAWN	R.SABINIANO					
CHECKED	S.YARI					
DATE	02/07/2025					
SCALE	N/A		REVISION	BY	APP.	

BENCHMARK

N/A

FIBER OPTIC CONSTRUCTION NOTES

- 1

FURNISH AND INSTALL SPLICE CLOSURE IN FIBER OPTIC PULL BOX. SPLICE CLOSURE SHALL ACCEPT AT LEAST 3 TRUNK CABLES. SPLICE SMFO CABLING AS SHOWN ON SHEETS 7 TO 9.
- 2

FURNISH AND INSTALL 12-STRAND SMFO BRANCH CABLE, TRACER WIRE AND THREE-CHAMBER FLEXIBLE INNERDUCT IN EXISTING CONDUIT.
- 3

FURNISH AND INSTALL 12-PORT FIBER TERMINATION PANEL, FIBER PIG TAILS, AND NEW ETHERNET SWITCH. TERMINATE ALL 12 FIBER STRANDS TO PANEL AND CONNECT TO NEW FIBER SWITCH.
- 4

PROTECT EXISTING TRAFFIC SIGNAL, COMMUNICATION, AND/OR STREET LIGHTING CONDUCTORS IN PLACE.
- 5

REMOVE AND REPLACE EXISTING FIBER OPTIC BOX WITH NEW N48 FIBER OPTIC PULL BOX AND CONDUIT SWEEPS. PULL BOXES REMOVED BECOME PROPERTY OF CONTRACTOR.
- 6

INSTALL CITY FURNISHED TRAFFIC SIGNAL CONTROLLER.
- 7

REMOVE AND REPLACE EXISTING NO 6 PULL BOX WITH NEW PULL BOX WITH SPLIT LID AND CONDUIT SWEEPS. PULL BOXES REMOVED BECOME PROPERTY OF CONTRACTOR.
- 8

FURNISH AND INSTALL NEW 3" CONDUIT.
- 9

SPLICE NEW 12-STRAND SMFO IN THE EXISTING SPLICE ENCLOSURE.
- 10

PROTECT EXISTING CONDUCTORS, EXISTING CONDUITS AND EXISTING FIBER IN PLACE.
- 11

REMOVE AND REPLACE EXISTING FIBER TERMINATION PANEL WITH NEW 12-PORT FIBER TERMINATION PANEL, FIBER PIG TAILS, AND NEW ETHERNET SWITCH. TERMINATE EXISTING 12 FIBER STRANDS TO PANEL TO AND CONNECT TO NEW FIBER SWITCH.
- 12

FURNISH AND INSTALL NEW N48 FIBER OPTIC PULL BOX.
- 13

REROUTE EXISTING CONDUIT AND EXISTING FIBER TO NEW FIBER OPTIC PULL BOX.
- 14

FURNISH AND INSTALL 12-STRAND SMFO BRANCH CABLE, TRACER WIRE AND THREE-CHAMBER FLEXIBLE INNERDUCT IN NEW CONDUIT.
- 15

CUT EXISTING 144-STRAND SMFO AND COIL IN NEAREST FIBER OPTIC PULL BOX UNTIL CONDUIT REROUTING COMPLETE.
- 16

RESPLICE EXISTING 144-STRAND IN NEW SPLICE CLOSURE.

FIBER OPTIC GENERAL NOTES

1.

LOCATIONS OF CONTROLLER, CONDUITS, PULL BOXES, AND OTHER EQUIPMENT ARE APPROXIMATE AND WILL BE LOCATED IN THE FIELD AS DIRECTED BY THE ENGINEER.
2.

PLAN IS ACCURATE FOR ELECTRICAL WORK ONLY.
3.

CONTRACTOR SHALL PROTECT ALL EXISTING CABLES AND CONDUCTORS IN PLACE, UNLESS NOTED ON THE PLANS OTHERWISE, AT NO ADDITIONAL COST TO THE CITY.
4.

ALL NEW CONDUITS INSTALLED IN EXISTING PULL BOXES SHALL PROVIDE A 45 DEGREE ELBOW WITH 36" RADIUS (MIN).
5.

ALL NEW CONDUITS SHALL BE INSTALLED VIA JACK AND BORE METHOD. CONTRACTOR SHALL WALK THE PROPOSED ALIGNMENT WITH THE ENGINEER, AND SUBMIT BORING PLAN FOR REVIEW.
6.

TRUNKLINE CONDUIT(S) SHOULD NOT DEFLECT BY MORE THAN ONE FOOT PER 10 FEET FROM THE ALIGNMENT BEFORE OR AFTER PULL BOX ENTRANCE/EXIT.
7.

ALL FIBER OPTIC PULL BOXES SHALL BE FURNISHED WITH TWO RACKS AND HOOKS INSTALLED ON EACH OF THE TWO LONG SIDES.
8.

"HAYWARD INTERCONNECT" SHALL BE CAST ON THE TO FACE OF ALL PULL BOX LIDS.
9.

ALL METALLIC CONDUITS SHALL HAVE THREADED METALLIC BUSHINGS. ALL PVC AND HDPE CONDUITS SHALL HAVE BELL ENDS.
10.

FURNISH AND INSTALL CAPS OR DUCT PLUGS FOR ALL UNUSED CONDUIT.
11.

EACH FIBER OPTIC PULL BOX SHALL BE EQUIPPED WITH 50' MIN. OF SLACK IN THE TRUNKLINE CABLE AND 50' MIN. OF SLACK IN THE BRANCH CABLE ON EACH SIDE OF THE FIBER OPTIC SPLICE CLOSURE. (i.e., THE TRUNKLINE CABLE TYPICALLY WILL HAVE 100' OF SLACK TOTAL AND THE BRANCH CABLE WITH TYPICALLY HAVE 50' OF SLACK TOTAL.)

TENNYSON RD & WINTON AVE SIGNAL COORDINATION PROJECT

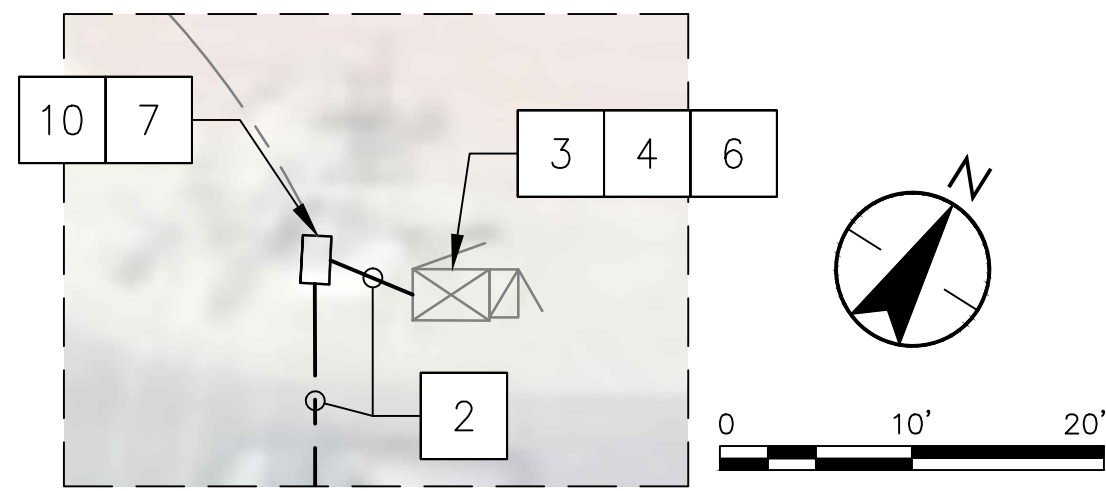
CITY PROJECT NUMBER: 05342 & TFCA PROJECT NUMBER: 24ALA05

PROJECT NOTES & LEGENDS

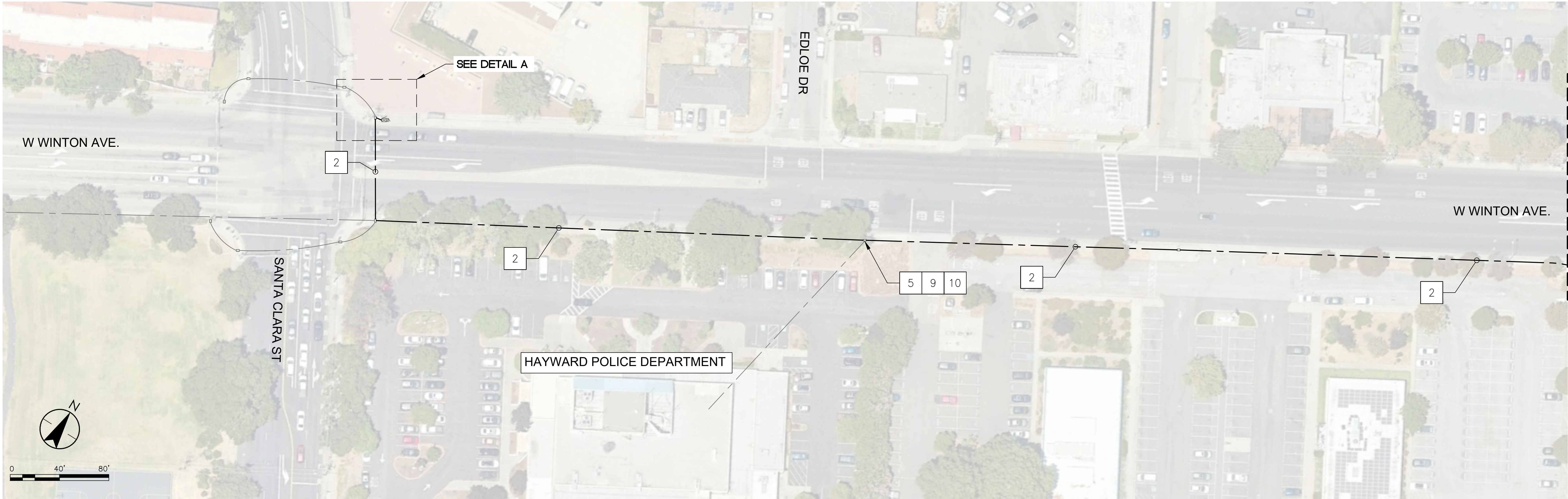
PJ NO.

SHEET 02 OF 09

DWG.



DETAIL A



FIBER OPTIC CONSTRUCTION NOTES

- 2
- FURNISH AND INSTALL 12-STRAND SMFO BRANCH CABLE, TRACER WIRE AND THREE-CHAMBER FLEXIBLE INNERDUCT IN EXISTING CONDUIT.
- 3
- FURNISH AND INSTALL 12-PORT FIBER TERMINATION PANEL, FIBER PIG TAILS, AND NEW ETHERNET SWITCH. TERMINATE ALL 12 FIBER STRANDS TO PANEL AND CONNECT TO NEW FIBER SWITCH.
- 4
- PROTECT EXISTING TRAFFIC SIGNAL, COMMUNICATION, AND/OR STREET LIGHTING CONDUCTORS IN PLACE.
- 5
- REMOVE AND REPLACE EXISTING FIBER OPTIC BOX WITH NEW N48 FIBER OPTIC PULL BOX AND CONDUIT SWEEPS. PULL BOXES REMOVED BECOME PROPERTY OF CONTRACTOR.
- 6
- INSTALL CITY FURNISHED TRAFFIC SIGNAL CONTROLLER.
- 7
- REMOVE AND REPLACE EXISTING NO 6 PULL BOX WITH NEW PULL BOX WITH SPLIT LID AND CONDUIT SWEEPS. PULL BOXES REMOVED BECOME PROPERTY OF CONTRACTOR.
- 9
- SPLICE NEW 12-STRAND SMFO IN THE EXISTING SPLICE ENCLOSURE.
- 10
- PROTECT EXISTING CONDUCTORS, EXISTING CONDUITS AND EXISTING FIBER IN PLACE.

- NOTES:
1. ALL EXISTING UTILITIES WERE PLOTTED FROM RECORD INFORMATION AND FIELD TOPOGRAPHY. ACTUAL LOCATIONS MAY VARY AND ADDITIONAL CROSSINGS MAY EXIST IN THE FIELD. IT IS IMPERATIVE THAT "U.S.A. LOCATING SERVICES" LOCATE AND MARK EXISTING UTILITIES PRIOR TO THE START OF EXCAVATION.
2. THE CONTRACTOR SHALL USE EXTREME CAUTION WHEN EXPOSING EXISTING UTILITY CROSSINGS AND SERVICES.
3. ANY DAMAGE TO EXISTING UTILITIES WILL BE THE SOLE RESPONSIBILITY OF THE CONTRACTOR.



Know what's below.
Call before you dig.



ADVANCED MOBILITY GROUP

3003 OAK ROAD, SUITE 100
WALNUT CREEK, CA 94597

DESIGNED	R.SABINIANO				
DRAWN	R.SABINIANO				
CHECKED	S.YARI				
DATE	02/07/2025				
SCALE	1"=40'		REVISION	BY	APP.

BENCHMARK

N/A

TENNYSON RD & WINTON AVE SIGNAL COORDINATION PROJECT

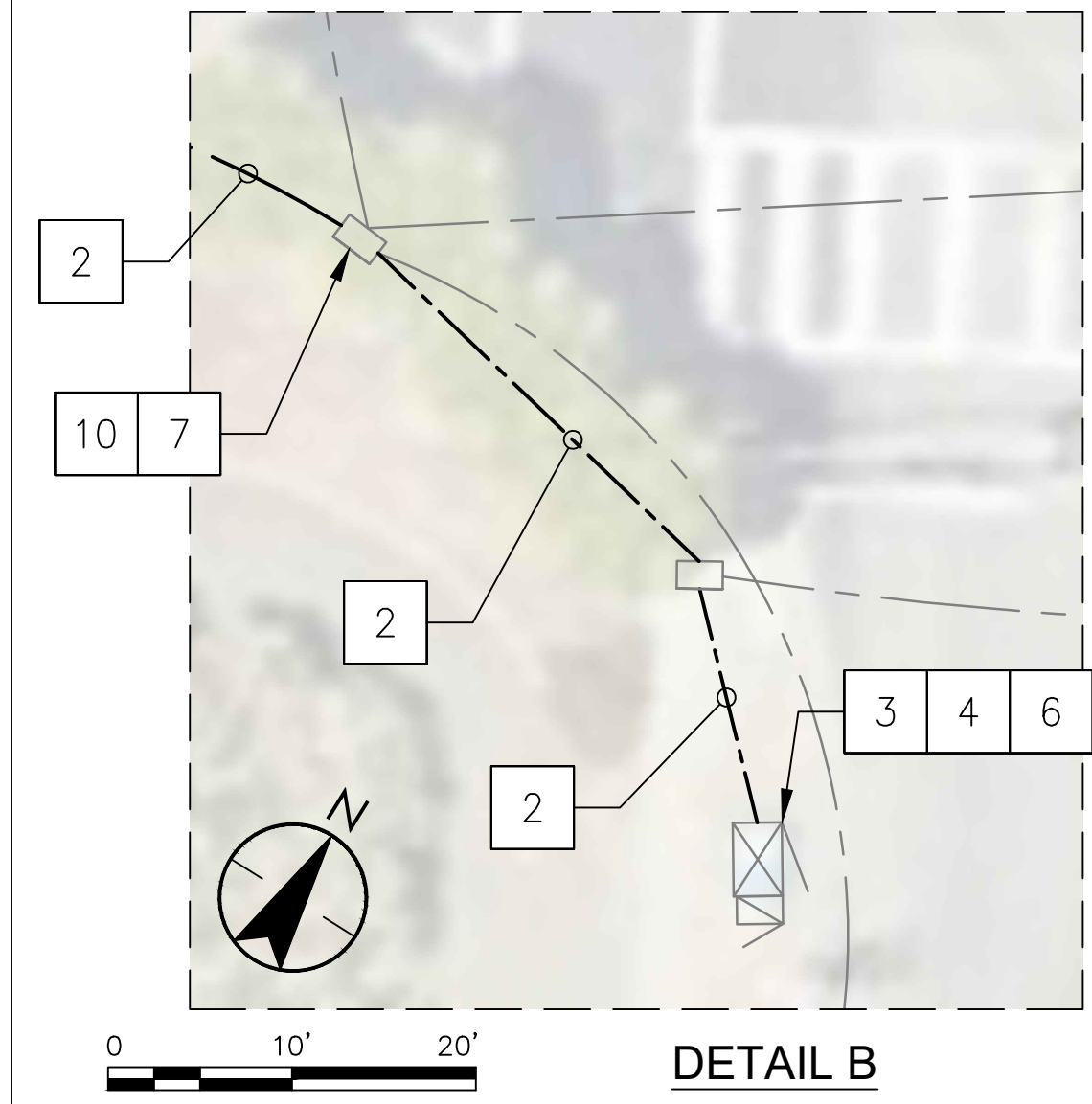
CITY PROJECT NUMBER: 05342 & TFCA PROJECT NUMBER: 24ALA05

SANTA CLARA ST & W WINTON AVE

PJ NO.

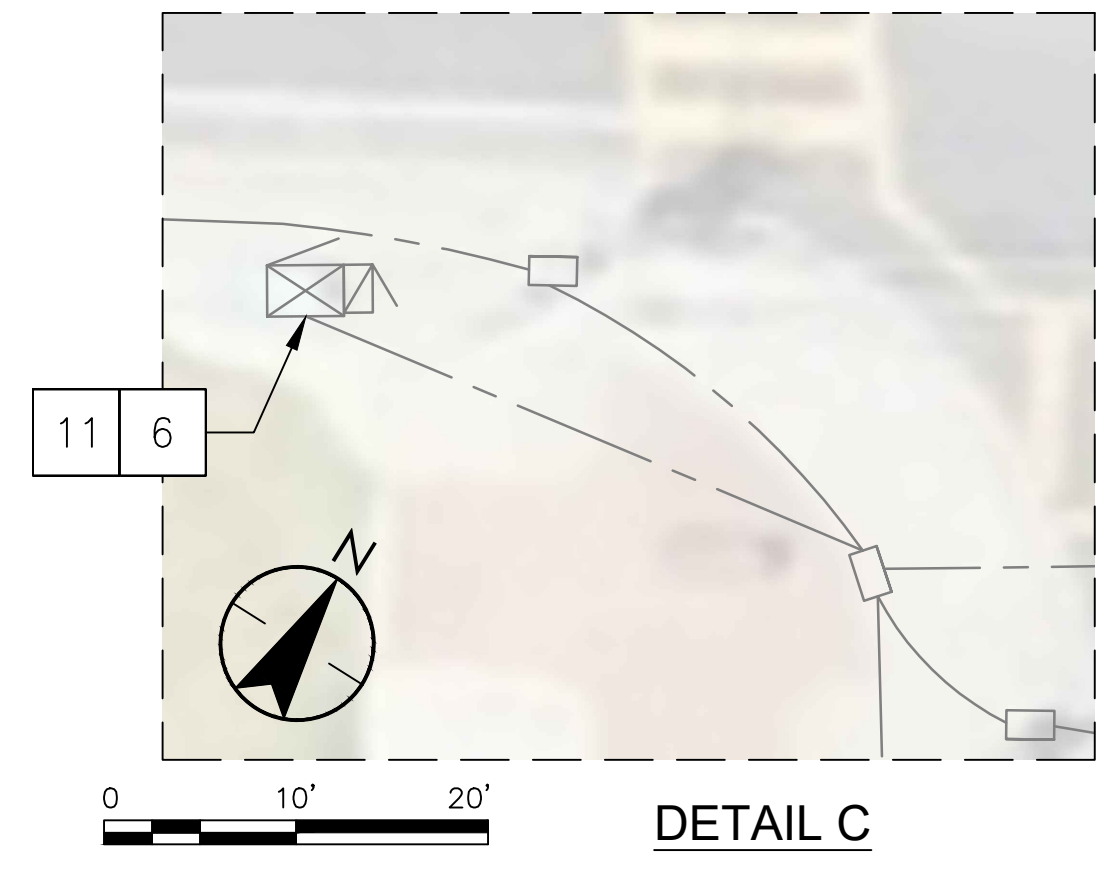
SHEET 03 OF 09

DWG.



FIBER OPTIC CONSTRUCTION NOTES

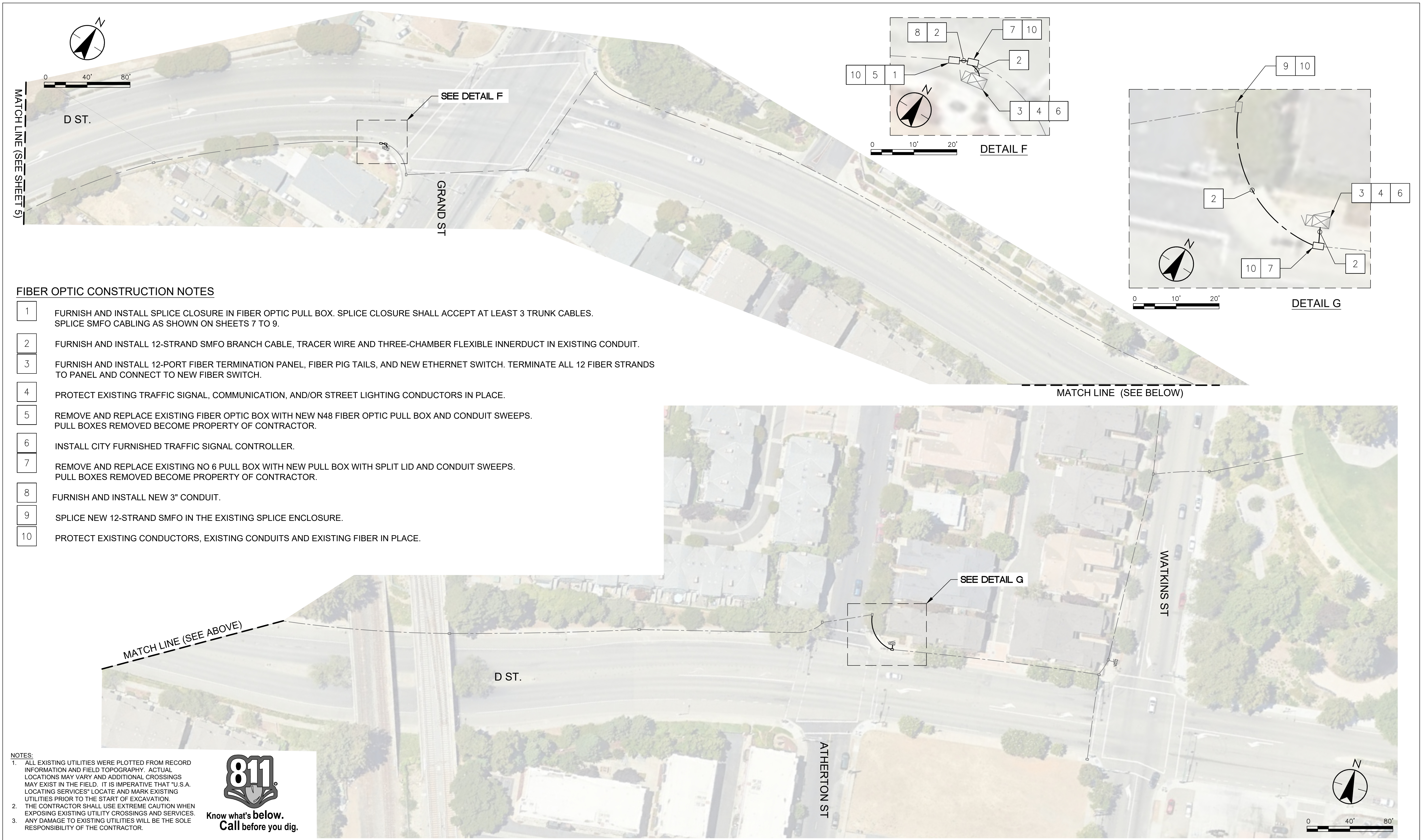
- 2 FURNISH AND INSTALL 12-STRAND SMFO BRANCH CABLE, TRACER WIRE AND THREE-CHAMBER FLEXIBLE INNERDUCT IN EXISTING CONDUIT.
- 3 FURNISH AND INSTALL 12-PORT FIBER TERMINATION PANEL, FIBER PIG TAILS, AND NEW ETHERNET SWITCH. TERMINATE ALL 12 FIBER STRANDS TO PANEL AND CONNECT TO NEW FIBER SWITCH.
- 4 PROTECT EXISTING TRAFFIC SIGNAL, COMMUNICATION, AND/OR STREET LIGHTING CONDUCTORS IN PLACE.
- 6 INSTALL CITY FURNISHED TRAFFIC SIGNAL CONTROLLER.
- 7 REMOVE AND REPLACE EXISTING NO 6 PULL BOX WITH NEW PULL BOX WITH SPLIT LID AND CONDUIT SWEEPS. PULL BOXES REMOVED BECOME PROPERTY OF CONTRACTOR.
- 10 PROTECT EXISTING CONDUCTORS, EXISTING CONDUITS AND EXISTING FIBER IN PLACE.
- 11 REMOVE AND REPLACE EXISTING FIBER TERMINATION PANEL WITH NEW 12-PORT FIBER TERMINATION PANEL, FIBER PIG TAILS, AND NEW ETHERNET SWITCH. TERMINATE EXISTING 12 FIBER STRANDS TO PANEL TO AND CONNECT TO NEW FIBER SWITCH.



NOTES:

- ALL EXISTING UTILITIES WERE PLOTTED FROM RECORD INFORMATION AND FIELD TOPOGRAPHY. ACTUAL LOCATIONS MAY VARY AND ADDITIONAL CROSSINGS MAY EXIST IN THE FIELD. IT IS IMPERATIVE THAT "U.S.A. LOCATING SERVICES" LOCATE AND MARK EXISTING UTILITIES PRIOR TO THE START OF EXCAVATION.
- THE CONTRACTOR SHALL USE EXTREME CAUTION WHEN EXPOSING EXISTING UTILITY CROSSINGS AND SERVICES.
- ANY DAMAGE TO EXISTING UTILITIES WILL BE THE SOLE RESPONSIBILITY OF THE CONTRACTOR.

Know what's below.
Call before you dig.



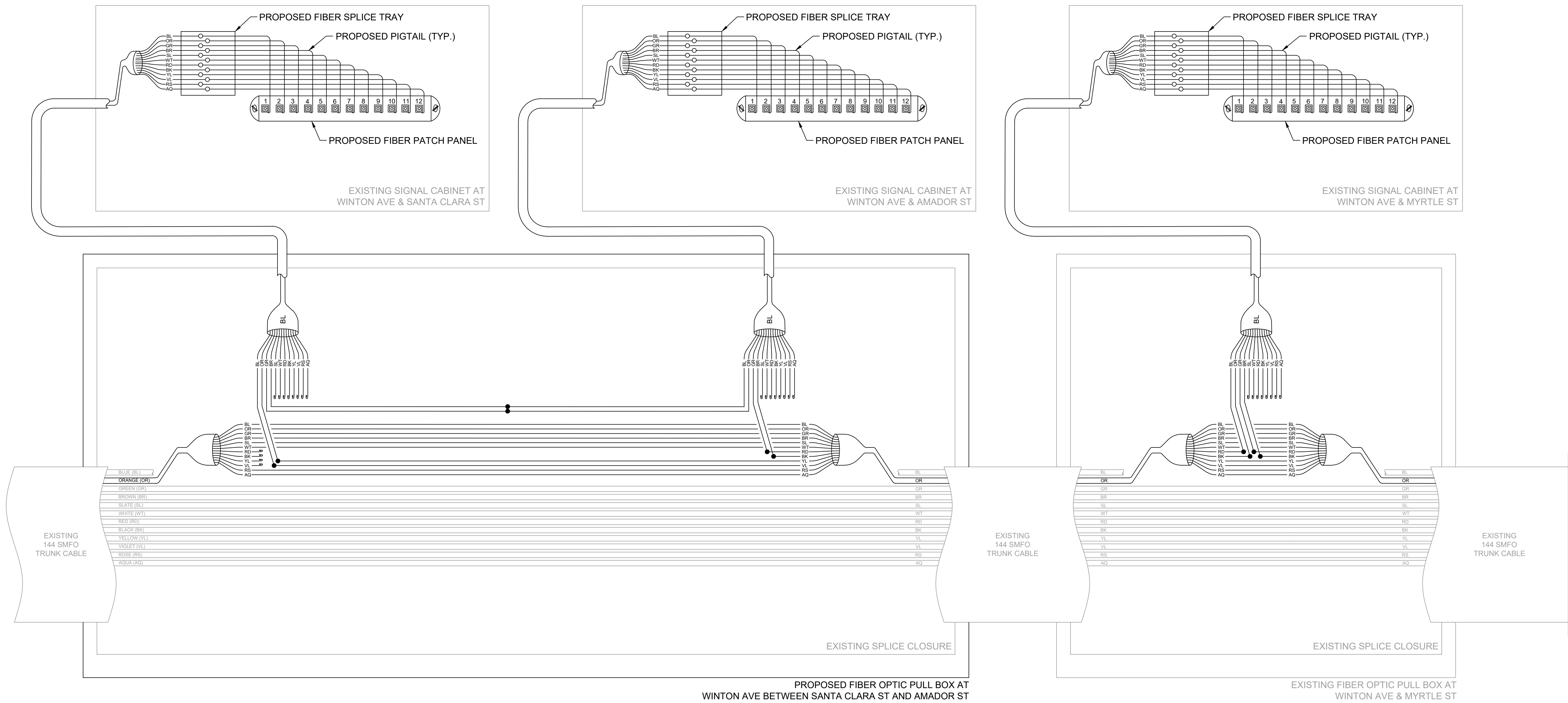
FIBER OPTIC CONSTRUCTION NOTES

- 1
- FURNISH AND INSTALL SPLICE CLOSURE IN FIBER OPTIC PULL BOX. SPLICE CLOSURE SHALL ACCEPT AT LEAST 3 TRUNK CABLES. SPLICE SMFO CABLING AS SHOWN ON SHEETS 7 TO 9.
- 2
- FURNISH AND INSTALL 12-STRAND SMFO BRANCH CABLE, TRACER WIRE AND THREE-CHAMBER FLEXIBLE INNERDUCT IN EXISTING CONDUIT.
- 3
- FURNISH AND INSTALL 12-PORT FIBER TERMINATION PANEL, FIBER PIG TAILS, AND NEW ETHERNET SWITCH. TERMINATE ALL 12 FIBER STRANDS TO PANEL AND CONNECT TO NEW FIBER SWITCH.
- 4
- PROTECT EXISTING TRAFFIC SIGNAL, COMMUNICATION, AND/OR STREET LIGHTING CONDUCTORS IN PLACE.
- 5
- REMOVE AND REPLACE EXISTING FIBER OPTIC BOX WITH NEW N48 FIBER OPTIC PULL BOX AND CONDUIT SWEEPS. PULL BOXES REMOVED BECOME PROPERTY OF CONTRACTOR.
- 6
- INSTALL CITY FURNISHED TRAFFIC SIGNAL CONTROLLER.
- 7
- REMOVE AND REPLACE EXISTING NO 6 PULL BOX WITH NEW PULL BOX WITH SPLIT LID AND CONDUIT SWEEPS. PULL BOXES REMOVED BECOME PROPERTY OF CONTRACTOR.
- 8
- FURNISH AND INSTALL NEW 3" CONDUIT.
- 9
- SPLICE NEW 12-STRAND SMFO IN THE EXISTING SPLICE ENCLOSURE.
- 10
- PROTECT EXISTING CONDUCTORS, EXISTING CONDUITS AND EXISTING FIBER IN PLACE.

NOTES:

- ALL EXISTING UTILITIES WERE PLOTTED FROM RECORD INFORMATION AND FIELD TOPOGRAPHY. ACTUAL LOCATIONS MAY VARY AND ADDITIONAL CROSSINGS MAY EXIST IN THE FIELD. IT IS IMPERATIVE THAT "U.S.A. LOCATING SERVICES" LOCATE AND MARK EXISTING UTILITIES PRIOR TO THE START OF EXCAVATION.
- THE CONTRACTOR SHALL USE EXTREME CAUTION WHEN EXPOSING EXISTING UTILITY CROSSINGS AND SERVICES.
- ANY DAMAGE TO EXISTING UTILITIES WILL BE THE SOLE RESPONSIBILITY OF THE CONTRACTOR.

**Know what's below.
Call before you dig.**

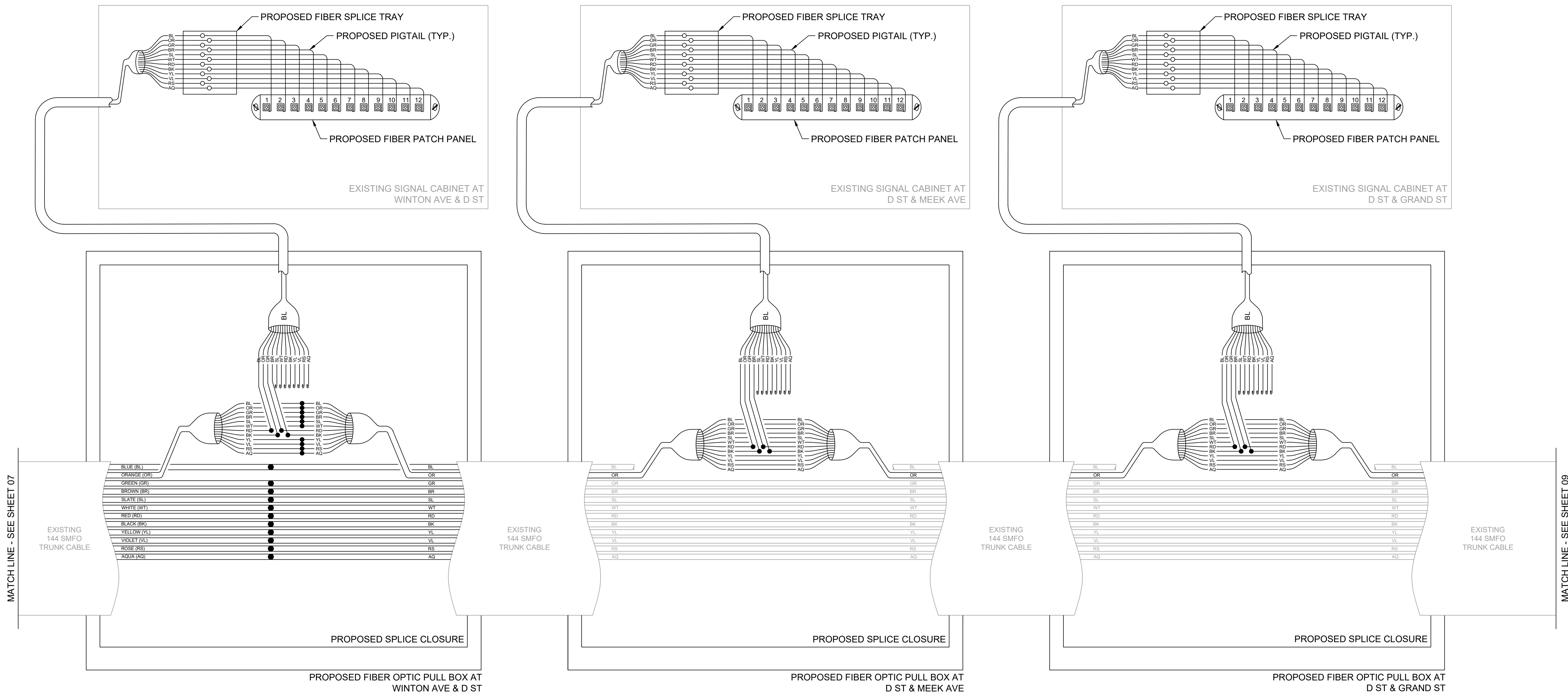


- NOTES:**
1. ALL EXISTING UTILITIES WERE PLOTTED FROM RECORD INFORMATION AND FIELD TOPOGRAPHY. ACTUAL LOCATIONS MAY VARY AND ADDITIONAL CROSSINGS MAY EXIST IN THE FIELD. IT IS IMPERATIVE THAT U.S.A. LOCATING SERVICES' LOCATE AND MARK EXISTING UTILITIES PRIOR TO THE START OF EXCAVATION.
 2. THE CONTRACTOR SHALL USE EXTREME CAUTION WHEN EXPOSING EXISTING UTILITY CROSSINGS AND SERVICES.
 3. ANY DAMAGE TO EXISTING UTILITIES WILL BE THE SOLE RESPONSIBILITY OF THE CONTRACTOR.



- LEGEND:**
- NEW FIBER SPLICE

	ADVANCED MOBILITY GROUP		DESIGNED		R.SABINIANO		BENCHMARK	N/A	TENNYSON RD & WINTON AVE SIGNAL COORDINATION PROJECT										PJ NO.			
	3003 OAK ROAD, SUITE 100		DRAWN		R.SABINIANO				CITY PROJECT NUMBER: 05342 & TFCA PROJECT NUMBER: 24ALA05										SHEET 07 OF 09			
	WALNUT CREEK, CA 94597		CHECKED		S.YARI				FIBER SPLICING DIAGRAM 1										DWG.			
			DATE		02/07/2025																	
			SCALE		N/A				REVISION		BY		APP.									



- NOTES:
1. ALL EXISTING UTILITIES WERE PLOTTED FROM RECORD INFORMATION AND FIELD TOPOGRAPHY. ACTUAL LOCATIONS MAY VARY AND ADDITIONAL CROSSINGS MAY EXIST IN THE FIELD. IT IS IMPERATIVE THAT U.S.A. LOCATING SERVICES' LOCATE AND MARK EXISTING UTILITIES PRIOR TO THE START OF EXCAVATION.
 2. THE CONTRACTOR SHALL USE EXTREME CAUTION WHEN EXPOSING EXISTING UTILITY CROSSINGS AND SERVICES.
 3. ANY DAMAGE TO EXISTING UTILITIES WILL BE THE SOLE RESPONSIBILITY OF THE CONTRACTOR.



ADVANCED MOBILITY GROUP

3003 OAK ROAD, SUITE 100
WALNUT CREEK, CA 94597

DESIGNED	R.SABINIANO				
DRAWN	R.SABINIANO				
CHECKED	S.YARI				
DATE	02/07/2025				
SCALE	N/A		REVISION	BY	APP.

BENCHMARK

N/A

TENNYSON RD & WINTON AVE SIGNAL COORDINATION PROJECT

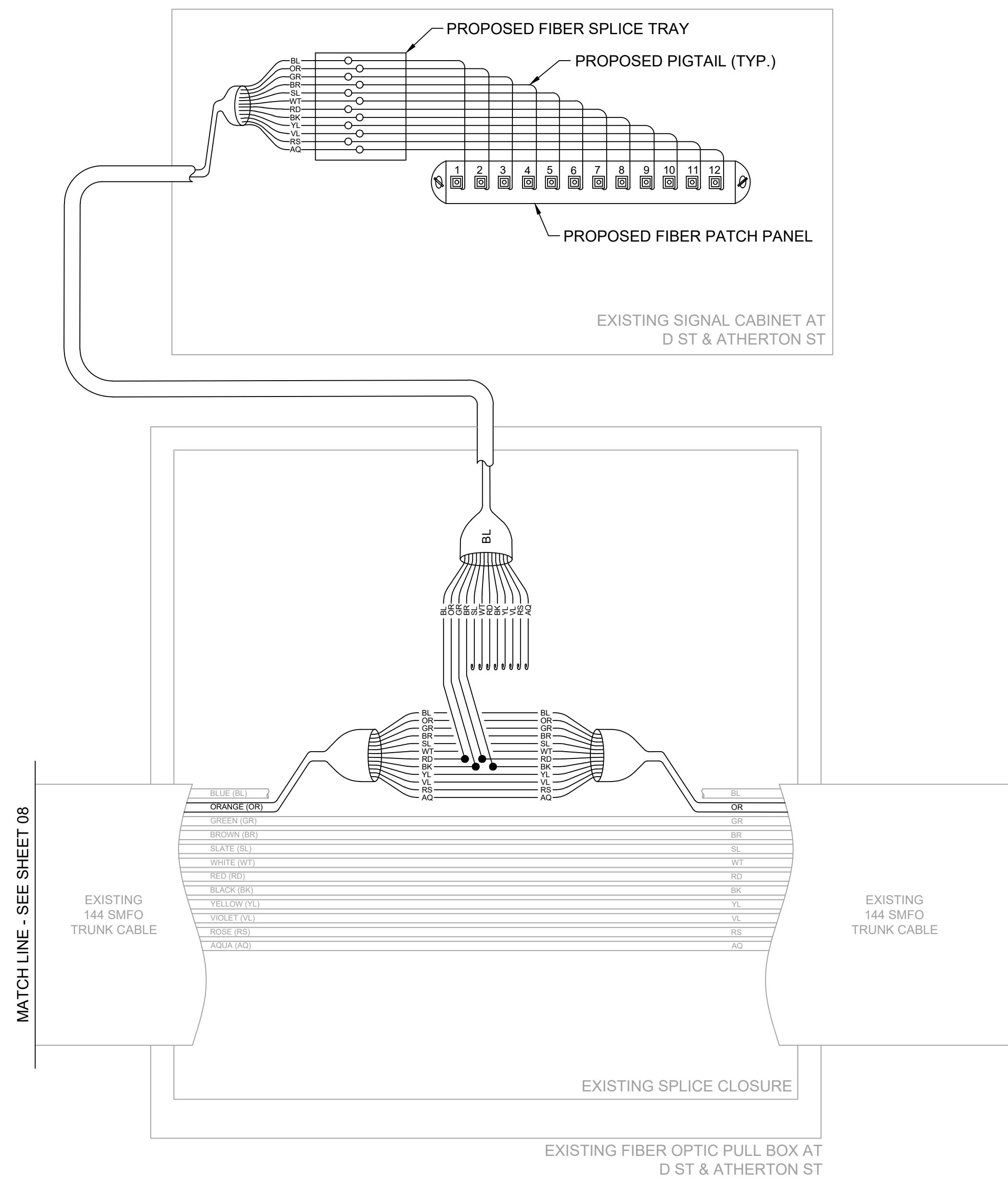
CITY PROJECT NUMBER: 05342 & TFCA PROJECT NUMBER: 24ALA05

FIBER SPLICING DIAGRAM 2

PJ NO.

SHEET 08 OF 09

DWG.



LEGEND:

● NEW FIBER SPLICE

- NOTES:
1. ALL EXISTING UTILITIES WERE PLOTTED FROM RECORD INFORMATION AND FIELD TOPOGRAPHY. ACTUAL LOCATIONS MAY VARY AND ADDITIONAL CROSSINGS MAY EXIST IN THE FIELD. IT IS IMPERATIVE THAT "U.S.A. LOCATING SERVICES" LOCATE AND MARK EXISTING UTILITIES PRIOR TO THE START OF EXCAVATION.
 2. THE CONTRACTOR SHALL USE EXTREME CAUTION WHEN EXPOSING EXISTING UTILITY CROSSINGS AND SERVICES.
 3. ANY DAMAGE TO EXISTING UTILITIES WILL BE THE SOLE RESPONSIBILITY OF THE CONTRACTOR.



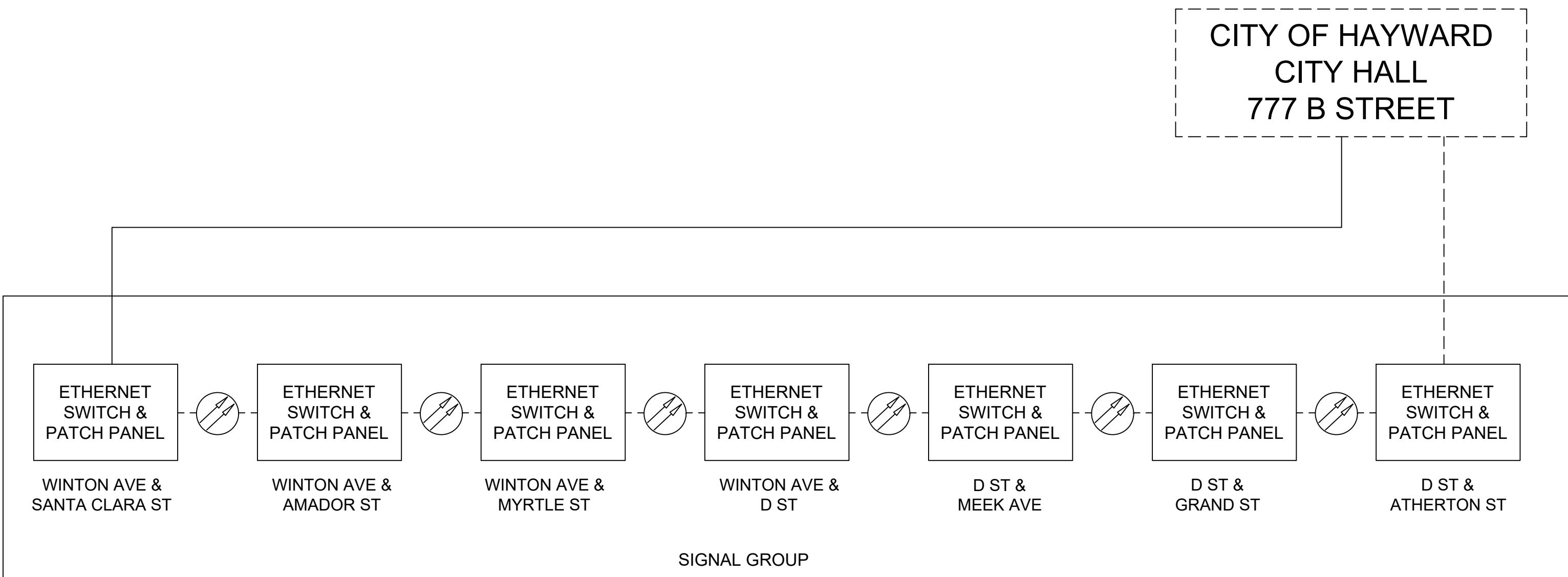
Know what's below.
Call before you dig.



ADVANCED MOBILITY GROUP
3003 OAK ROAD, SUITE 100
WALNUT CREEK, CA 94597

DESIGNED	R.SABINIANO				
DRAWN	R.SABINIANO				
CHECKED	S.YARI				
DATE	02/07/2025				
SCALE	N/A		REVISION	BY	APP.

BENCHMARK
N/A



LEGEND

- FIBER CONNECTION VIA EXISTING FIBER
- EXISTING EQUIPMENT/CONNECTION
- PROPOSED EQUIPMENT/CONNECTION

FIBER OPTIC NETWORK NOTES (THIS SHEET ONLY)

1. CONTRACTOR SHALL MAKE THE NECESSARY ADJUSTMENT AND VERIFY THAT ALL SIGNALS ARE COMMUNICATING BACK TO CITY OF HAYWARD CITY HALL AND ARE CONNECTED TO THE EXISTING ATMS SYSTEM PRIOR TO PROJECT COMPLETION.

TENNYSON RD & WINTON AVE SIGNAL COORDINATION PROJECT
CITY PROJECT NUMBER: 05342 & TFCA PROJECT NUMBER: 24ALA05
FIBER SPLICING DIAGRAM 3

PJ NO.

SHEET 09 OF 09

DWG.