



SMALL WIRELESS FACILITIES ON WOODEN POLES FREQUENTLY ASKED QUESTIONS

Where are these new wireless facilities being installed?

The small cellular wireless sites are being installed on wooden utility poles within public right-of-way. None of these facilities are located on private property.

Who owns the wood poles?

The majority of wood utility poles in the City of Hayward are owned by Pacific Gas & Electric. The City of Hayward owns a majority of the street light poles in the City and small cell facilities are not currently allowed on these poles.

Can the City prohibit the installation of wireless facilities on wood poles?

No. Under State law, telecommunications carriers have a right to install wireless facilities on wood poles in the public right-of-way. The City, however, regulates the design, location, and placement of those facilities through Article 13 ([Antenna and Telecommunications Facilities Ordinance](#)) of the Hayward Municipal Code. Small cell wireless facilities on wooden poles are considered [Class 1](#) facilities, which requires [Site Plan Review](#). Small cell facilities and antennas are typically placed either midway up the wooden pole (side-arm configuration) or on top of a pole (top-mount).

Does the City's review process address health concerns?

Only in part. Under federal law ([1996 Telecommunications Act](#)), the City is prohibited from denying a permit to construct a wireless facility based on health concerns over Radio Frequency (RF) emissions, provided that the emissions from the facility comply with Federal Communications Commission (FCC) standards. To assure compliance with FCC standards, the City of Hayward's Planning Division reviews every application for a wireless facility and requires an RF emissions study for each facility. If the facility is approved and installed, then field testing is required to ensure the facility meets the FCC's standards. Residents can ask for testing of their dwelling units at no charge (free) by contacting the City's Planning Division, who will arrange the testing with the project applicant. Testing is also required every time a permit is renewed, and every time the site is modified (replacing/adding antennas or equipment) to ensure those modifications will not exceed FCC's standards.

When an RF report is prepared, it takes into account the location, orientation, and output of the antenna, relative to the nearest publicly-accessible areas, such as balconies, roof decks, and nearby dwellings (including upper stories). If the RF report includes a co-location wireless site where more than one facility is located, the RF report includes output analysis for both. Additionally, the RF emissions at any publicly-accessible area must also comply with standards set by the Federal Communications Commission (FCC).

Does the City's Site Plan Review process address the design of the facility?

Yes. The Planning Department works with each applicant for a wireless facility to consider a design that is appropriate for the proposed location. While most of these are co-located with public utilities, each design has its own challenges, such as the overall height of the pole, the amount of utility equipment on the pole, and the existing condition of the pole. City staff continually engages with wireless carriers and equipment manufacturers to seek designs that are less intrusive in an effort to better integrate these facilities within the surrounding environment.



SMALL WIRELESS FACILITIES ON WOODEN POLES FREQUENTLY ASKED QUESTIONS

Who do these facilities serve and what companies operate them?

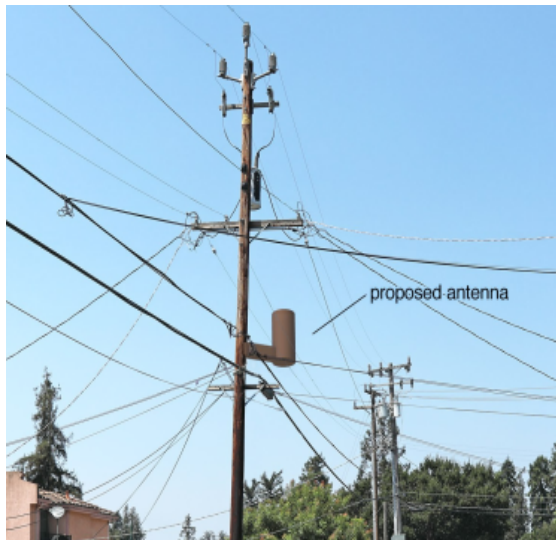
The wireless facilities installed on wooden utility poles are primarily intended to serve customers of wireless carriers licensed by the FCC to operate in Hayward including AT&T, Sprint, T-Mobile, and Verizon Wireless. You might see signs on the utility poles that identify companies such as Crown Castle (NextG) and ExteNet Systems as the owner of the facilities. These companies are authorized by the California Public Utilities Commission (CPUC) to install and operate the wireless facilities on wooden poles on behalf of their wireless carrier customers. The CPUC is a distinct State agency which regulates various utilities throughout California but these companies must obtain permits from City of Hayward.

Do the antennas generate noise?

Generally, no. Some wireless facilities incorporate cooling fans within the equipment cabinets in order to regulate the temperature for the wireless equipment inside. As such, some of the cooling fans may generate a small amount of noise. If an existing system seems to be generating excessive noise, please contact the City's Planning Department at 510-583-4200. In some instances, steps can be taken to reduce noise from cooling fans.

What equipment do wireless carriers typically install on the wood poles?

A typical wireless facility on a utility pole consists of one or more antennas and one or more equipment boxes. The equipment boxes are usually attached to the pole. While every system varies, the equipment boxes typically include an electric meter, a disconnect switch, and computers to control the antennas. Some wireless facilities also feature an equipment box on the same pole or nearby pole, that contains batteries used to provide temporary emergency power to the facility in case of a power outage.



EXAMPLE: Side Mounted Antenna



EXAMPLE: Top Mounted Antenna

If I have questions about these facilities in my neighborhood, who should I contact?

For general questions about wireless facilities, please contact the Duty Planner in the City's Planning Division at 510-583-4200. If you received a Notice of Application and have specific questions about a wireless facility, please contact the project planner assigned to that application. The contact information for that planner can be found at the bottom of the public notice or you can call the Planning Division for more information.