

# GUIDE TO RECYCLING SERVICES

## GUÍA PARA SERVICIOS DE RECICLAJE



### CART SET-OUT REGULATIONS

#### REGLAMENTOS DE COLOCACIÓN DE BOTES

Place carts at least two feet from each other. Carts must be retrieved and placed on private property and out of view from the street no later than midnight on your scheduled collection day (HMC 5-1.15).

# LANDFILL VERTEDERO



Snack & Chip Bags,  
Candy Wrappers



Plastic Wrap, Bags &  
Other Plastic Film



Broken Glass & Dishes



*Desechos de  
mascotas*



FOAM

*espuma de  
Poliestireno*



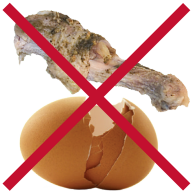
Drink & Beverage Cartons,  
Boxes / Pouches  
(Multi-Material Packaging)



Plastic Utensils, Straws, Cup Lids  
And To-Go Containers



Disposable Drink Cups, Plastic  
Lined/Coated Plates And To-Go-  
Containers (With Surface Sheen)



Have a question about an item you don't see listed here?



Visit the RE:Source guide at [StopWaste.org](http://StopWaste.org) for questions about reuse, repair, recycling and safe disposal options for everything from electronics and clothes to furniture and bicycles.

Visite la guía RE: Source en [StopWaste.org](http://StopWaste.org) si tiene preguntas sobre las opciones de reutilización, reparación, reciclaje y eliminación segura.



Hayward.wm.com  
510-537-5500



# ORGANICS ORGÁNICOS



Food Scraps, Including Egg Shells, Meat & Bones



Food Soiled Paper, Napkins, Paper Towels, Pizza Boxes, Cardboard Egg Cartons, Non-coated Take-out Containers & Paper Plates (No surface sheen)



Coffee Grounds & Tea Bags



Yard Waste, Untreated Wood



Pet Waste  
Desechos de mascotas



**Keep Plastic Bags Out of Organics /  
Mantenga las bolsas de plástico fuera de los orgánicos**

Empty from a reusable container or place in a paper bag, then dispose in green cart. Plastic bags of any kind (including those labeled compostable) are not accepted.

*No se aceptan bolsas de plástico de ningún tipo (incluidas las etiquetadas como compostables).*



# RECYCLING RECICLE

Please Empty All Recyclables of Food and Liquid



Clean Paper, Magazines, Newspaper, Cardboard, Junk Mail,  
Paper Beverage Cartons (must be empty)



All Metal Beverage & Food Cans, Aerosol Cans, Clean Aluminum Pans & Foil



Glass Bottles & Jars  
(Even broken)



Empty Plastic Bottles, Rigid Plastic Containers  
(Lids should be left on after emptying)



Foam Containers  
Poliestireno



Pet Waste  
Desechos de mascotas



**Keep Recyclables Loose / Mantenga sueltos los reciclables**

Do not place recyclables in a plastic bag. Empty first then place plastic bag in the trash. Plastic bags of any kind are not accepted.

No coloque materiales reciclables en una bolsa de plástico. Vacíe primero y luego coloque la bolsa de plástico en la basura. No se aceptan bolsas de plástico de ningún tipo.



# SERVICES SERVICIOS

## BULKY ITEM REMOVAL

### RETIRO DE ARTÍCULOS VOLUMINOSOS

Waste Management will remove up to two cubic yards of garbage and other bulky items twice per calendar year with an appointment. **(Single-family homes only)** To set up an appointment, or for more information, call Waste Management of Alameda County (WMAC) at 510-537-5500.



There is no fee to remove the following items:

- 2 cubic-yards of garbage (about 16 large bags);
- 3 pieces of household furniture, including carpet;
- Large recyclable items including:
  - » 3 large appliances; 2 mattresses; 3 scrap metal items; 2 e-waste items; and 4 passenger car tires

Place items no more than 6 feet from your curb or edge of pavement if there is no curb. To avoid traffic hazards, do not place items in the street. Please place items curbside no earlier than the day before your appointment to avoid illegally dumped debris.

### Multi-family Unit Complexes

Contact your property manager to arrange for free bulky item removal.

## SELF-HAUL DISPOSAL COUPON AVAILABLE

### CUPÓN DE AUTO-RECOJO DISPONIBLE

Waste Management provides coupons that waive the fee for disposal of up to two cubic yards of household garbage self-hauled to the Davis Street Transfer Station. A fee will be charged for bulky items. No household hazard waste.

To request a coupon, call Waste Management at (510) 537-5500 or pick up a coupon from Waste Management's downtown office at 22770 Main Street in Hayward.

## USED HOUSEHOLD BATTERIES, MOTOR OIL & FILTER COLLECTION

### RECOLECCIÓN DE LAS BATERÍAS GASTADAS Y ACEITE DE MOTOR Y FILTROS USADOS

Put old household batteries in a sealed plastic bag next to the recycle cart. Used motor oil and filters can be recycled curbside if in containers provided by Tri-CED. To order two free jugs and a bag to recycle the filter, call Tri-CED at (510) 537-9963. **(Single-family homes only)**



## REPLACE YOUR 64-GALLON GREEN CART WITH A 96-GALLON CART AT NO CHARGE (510-537-5500)

REEMPLACE SU BOTE VERDE DE 64 GALONES POR UNO DE 96 GALONES SIN COSTO ADICIONAL (510-537-5500)



## REQUEST A GREEN KITCHEN PAIL AT NO CHARGE (510-537-5500)

SOLICITE UNA CUBETA VERDE PARA COCINA SIN CARGO ALGUNO (510-537-5500)



# SPECIAL SERVICES

## SERVICIOS ESPECIALES



### DISCOUNT ON GARBAGE RATES AVAILABLE

#### DESCUENTO EN BASURA TARIFAS DISPONIBLES

A discount on garbage rates for low-income residents is available. To obtain an application or for more information, please call the City's Revenue Division at (510) 583-4600. The application is also available on the City's website at this link: <https://www.hayward-ca.gov/residents/utilities>.

Para obtener esta información en español, por favor llame a la Ciudad de Hayward at (510) 583-4614.



### SIDE YARD COLLECTION SERVICE

#### DESCUENTOS DISPONIBLES EN SERVICIOS DE RECOJO

Side yard service for garbage, organics, and recyclables is available at no additional charge to single-family home residents who are disabled, or 65 years of age or older, and who have no able-bodied adults living in their home. Side yard service is available to all other residents for a fee.

To apply for side yard garbage and organics collection, please call Waste Management at (510) 537-5500. For recycling services, please call Tri-CED at (510) 537-9963.



### FREE HOLIDAY TREE PICK UP

#### RECOJO GRATUITO DE ÁRBOLES DE NAVIDAD

All properties are eligible for free pickup of holiday trees during the first two weeks of January. Only clean trees will be picked up; no flocked trees, stands or decorations. Trees must be cut to less than five feet.

### CONTACTS & IMPORTANT NUMBERS

#### CONTACTOS Y NÚMEROS IMPORTANTES



Garbage, Organics Collection and Curbside Clean-up Day Appointments

Waste Management of Alameda County:  
(510) 537-5500 • [www.Hayward.wm.com](http://www.Hayward.wm.com)  
email: [cscalbay@wm.com](mailto:cscalbay@wm.com)



#### Recycling Collection

Tri-CED Community Recycling:  
(510) 537-9963 • [www.tri-ced.org](http://www.tri-ced.org)

# ADDITIONAL INFORMATION

## SERVICIOS ADICIONALES



### HOUSEHOLD HAZARDOUS WASTE

#### DESECHOS DOMÉSTICOS PELIGROSOS

Take hazardous items to the Household Hazardous Waste Facility at 2091 West Winton Avenue, Hayward.

Acceptable Items: Fluorescent bulbs, paints, stains, solvents, adhesives, garden and auto chemicals, batteries, electronic waste.

Available to all Alameda County residents who bring their own household hazardous waste. Visit [household-hazwaste.org](http://household-hazwaste.org) or call 800-606-6606 for more details, including Small Business Program information.



### DO NOT POUR FATS, OILS, & GREASE DOWN THE DRAIN

#### NO VIERTA ACEITES, GRASAS U OTROS LÍPIDOS EN EL DRENAJE

FOG includes: cooking oils, shortening, dairy products, sauces and salad dressings. FOG does not belong down your drain because it can block sewer lines and cause overflows.

1. Pour cooled FOG into a sturdy paper container like a box or egg carton.
2. Remove remaining FOG by scraping greasy pans and absorbing oil with a paper towel.
3. Dispose of these items in your organics cart.



### AVOID OVERAGE CHARGES

#### EVITE CARGOS POR REBALSE

Materials must fit inside a container with the lid shut for regular service. Excess materials in containers present environmental, service and safety risks, and may be subject to a non-containerized garbage fee.

If you regularly have excess materials, consider placing more food scraps in your green cart, or call Customer Service at 510-537-5500 to order an extra trash service sticker.

### RECYCLING INFORMATION FROM STOPWASTE

#### INFORMACIÓN DE RECICLAJE DE STOPWASTE

Ever wonder what to put where in your curbside bin? Wonder no more! StopWaste's new RE:Source guide allows you to search your city's guidelines for everything from milk cartons to clamshells. Visit [StopWaste.org](http://StopWaste.org) to get started.

