

# 21<sup>ST</sup> CENTURY LIBRARY and Community Learning Center for **HAYWARD**

## CITY OF HAYWARD

**JANE LIGHT**  
Interim Library Director

**KATHY GARCIA**  
Deputy Director of  
Public Works

**KEVIN BRIGGS**  
Project Manager

## NOLL & TAM ARCHITECTS

**CHRISTOPHER NOLL**  
Principal

**SCOTT SALGE**  
Project Manager

## rhaa LANDSCAPE ARCHITECTS

**MANUELA KING**  
Principal

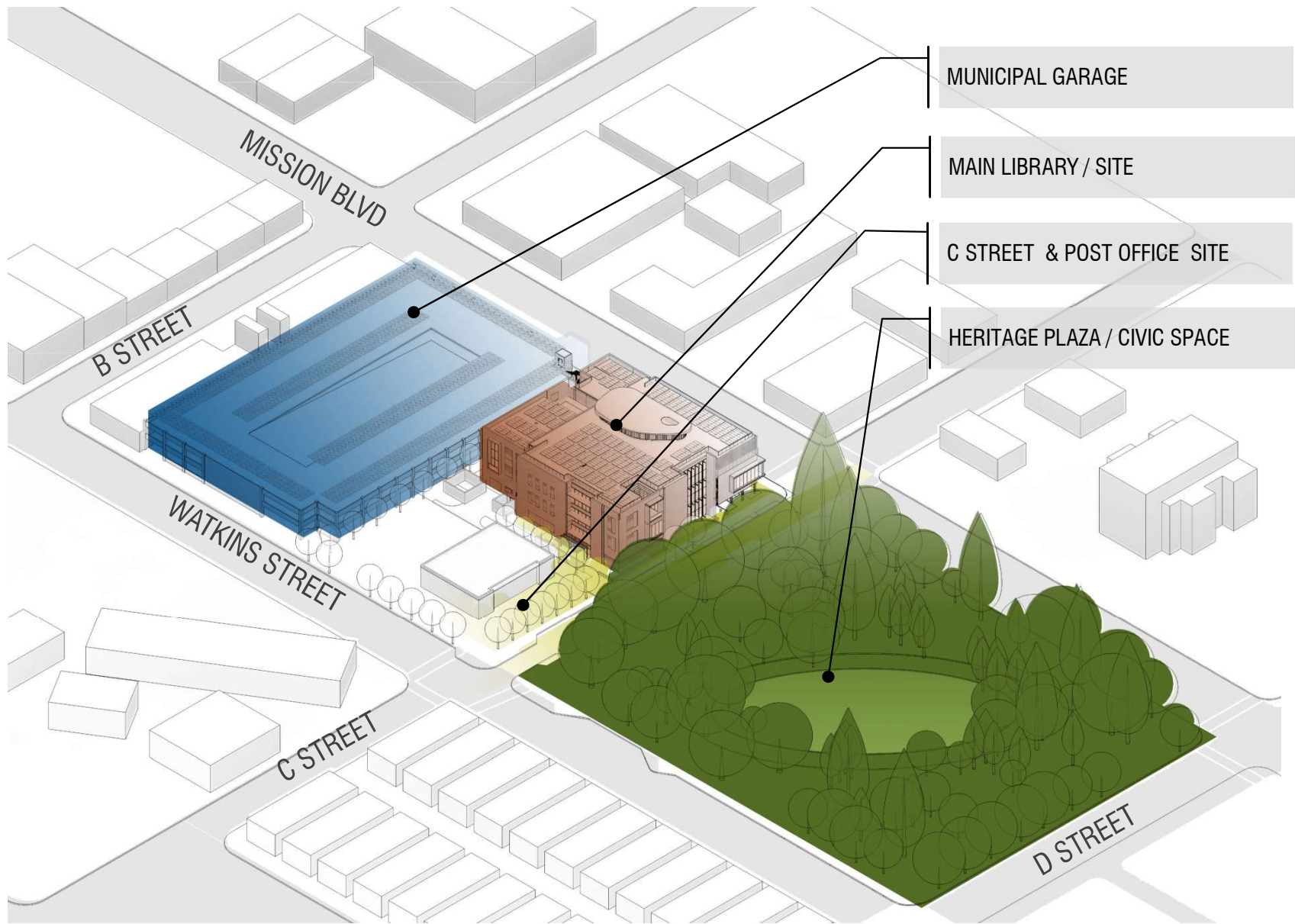
**JACOB MILLARD**  
Associate, Project Manager

**ROBIN KIM**  
Assisting Designer



HAYWARD CITY COUNCIL

| NOLL & TAM | 10 July 2018  
ARCHITECTS



## HAYWARD LIBRARY & COMMUNITY LEARNING CENTER HERITAGE PLAZA PROJECT SCOPE

# HAYWARD LIBRARY & COMMUNITY LEARNING CENTER PROGRAM HIGHLIGHTS

- Children's Homework Tutoring Center
- Story time Space
- Dedicated Teen Library Space and Homework Center
- Friends of the Library Store
- Digital Learning Center and Maker Lab Space
- Community Meeting Spaces
- Large Community Room for 200 people
- Community Learning Center for Hayward adults and seniors

**...and much more.**



## GREEN BUILDING AND SUSTAINABILITY GOALS

- Minimum building lifespan goal of 75 years
- Goal to Achieve LEED Platinum
- Eliminate building use of fossil fuels
- Harvest and reuse Rainwater for Library and Landscape
- Model of civic stewardship to the bay area and the nation

## ANNUAL BUILDING ENERGY USE GOALS BEYOND LEED

- Reduce the Library's energy consumption by 50%
- 100% solar powered Library to achieve annual "Zero Net Energy"

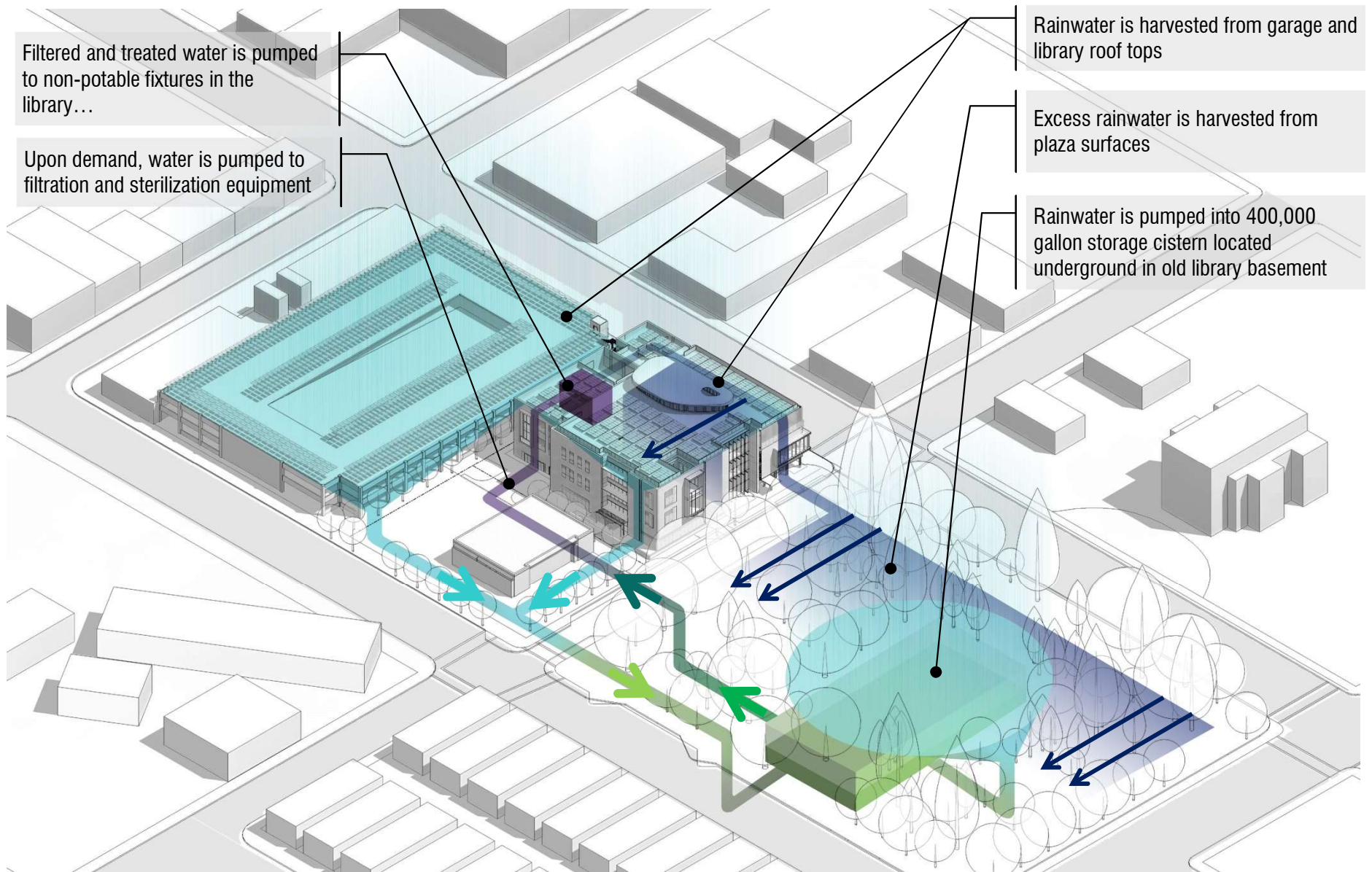


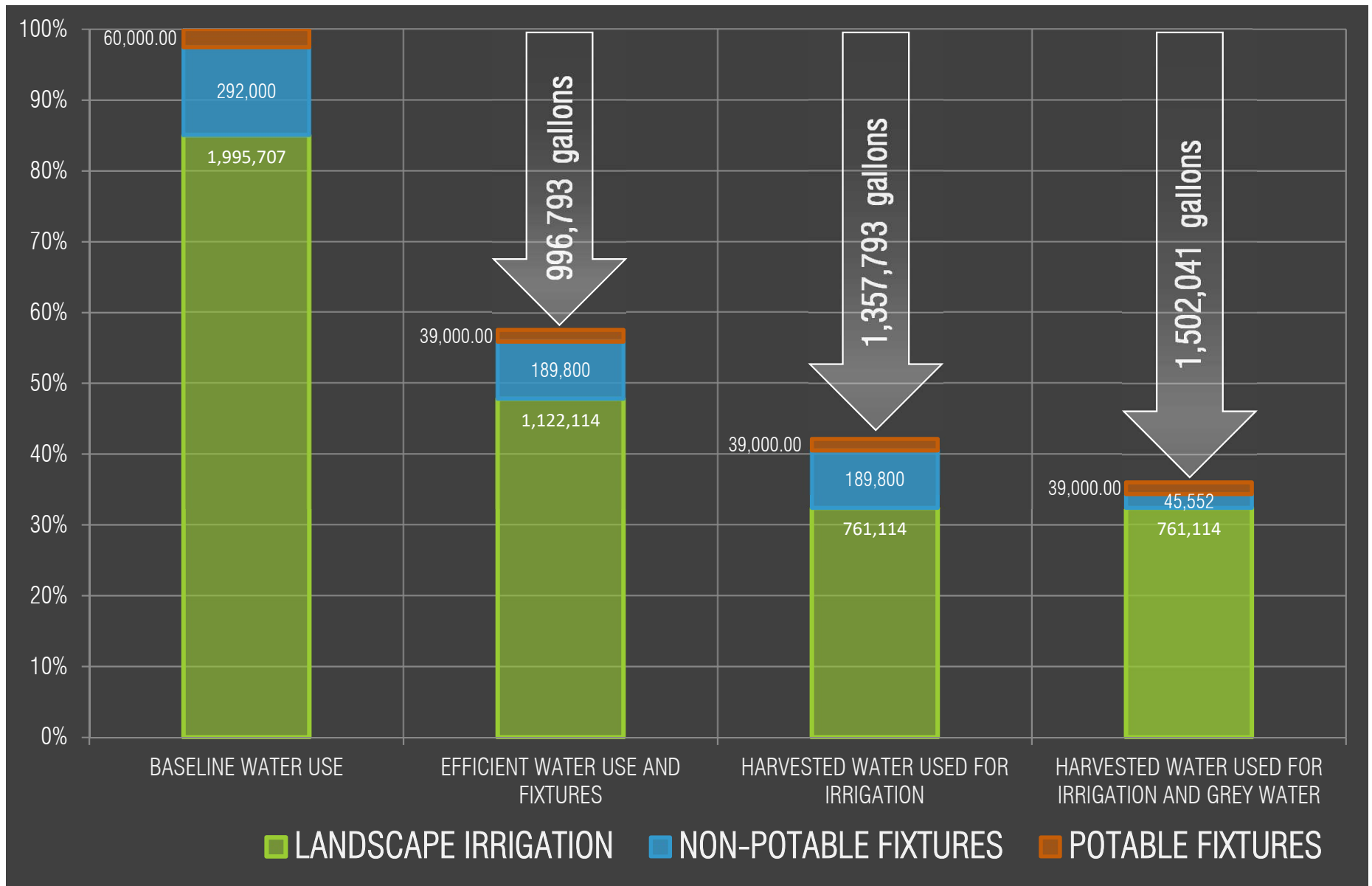
## SUSTAINABILITY AND ENERGY GOALS

---

# RAINWATER CAPTURE







## PROJECT WATER USE REDUCTION GOALS

# HERITAGE PLAZA







# DOWNTOWN HAYWARD 1948



Images Courtesy: Hayward Area Historical Society



rhaa  
INTEGRITY • INNOVATION • INSPIRATION

NOLL & TAM  
ARCHITECTS

10 July 2018



## PROJECT SITE

| NOLL & TAM | 10 July 2018  
ARCHITECTS



## 2018 PLAN WITH FORMER LIBRARY LOCATION



## 2014 PLAN











## REDUCED AMOUNT OF TURF

rhaa  
INTEGRATIVE ARCHITECTURE

NOLL & TAM  
ARCHITECTS

10 July 2018







# CHILDREN'S GARDEN

rhaa | NOLL & TAM | 10 July 2018  
ARCHITECTS

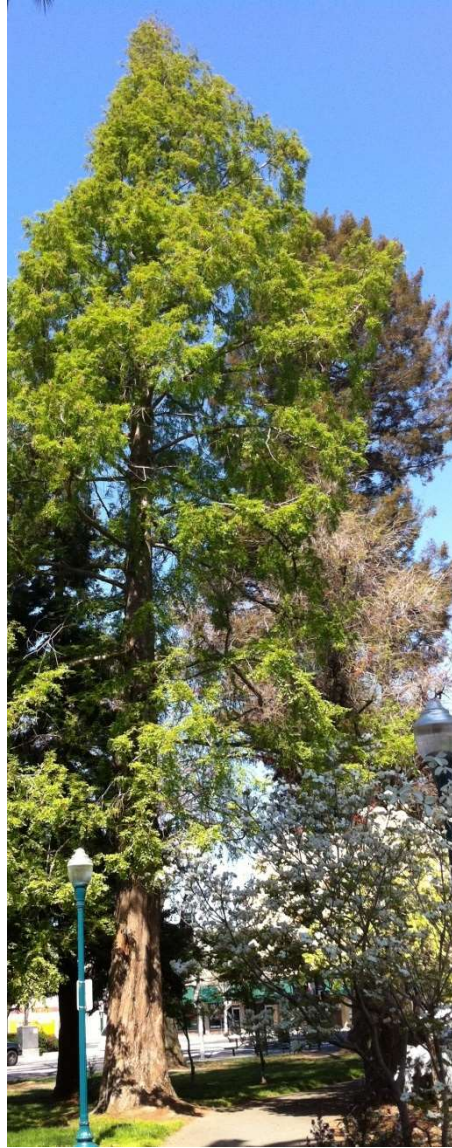


## INCLUSION OF JAPANESE AMERICAN MEMORIAL

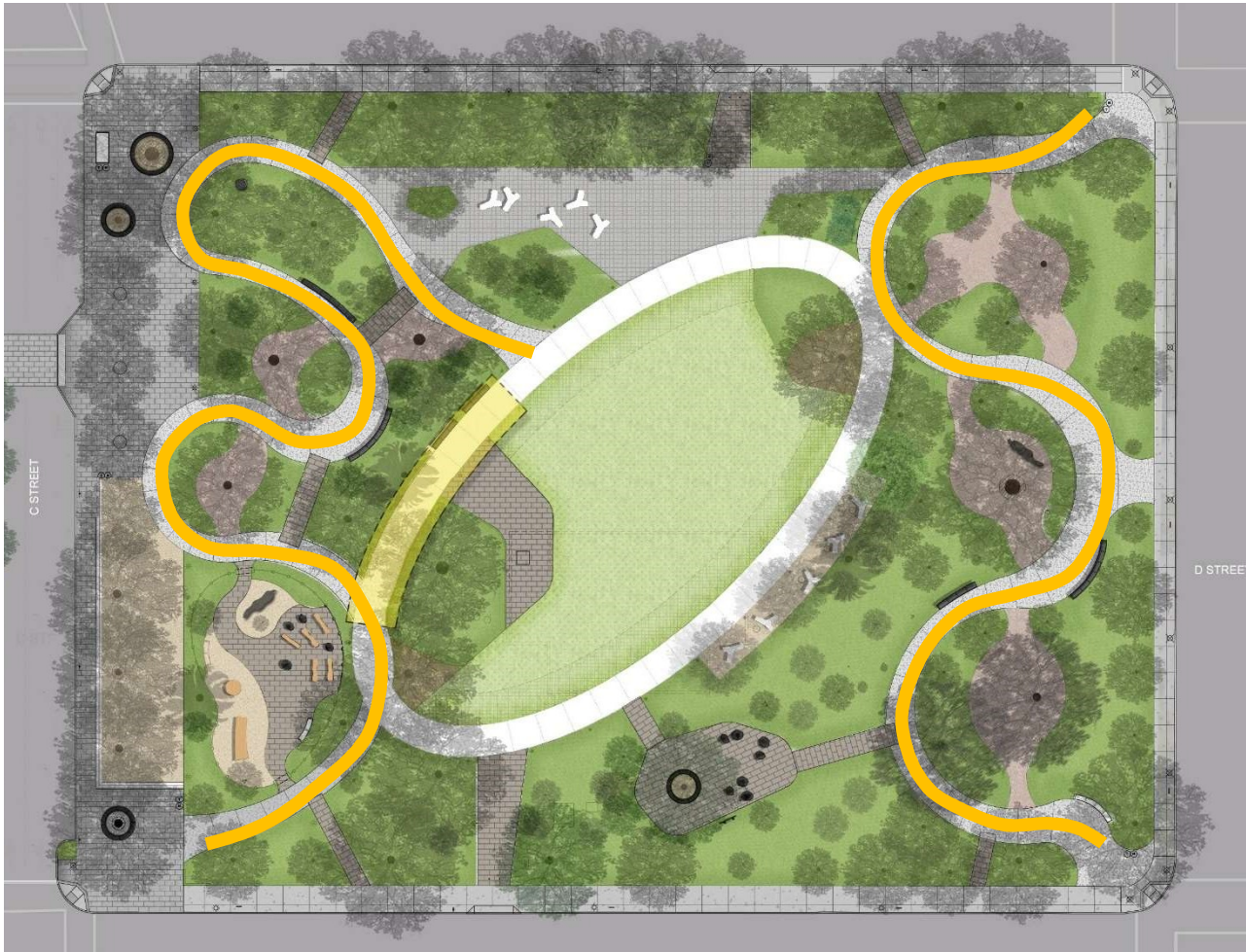


- COAST REDWOOD
- DAWN REDWOOD
- CANARY PALM
- GINKGO
- MAGNOLIA
- OTHER
- STORM DAMAGED TREES TO BE REPLACED

# SIGNIFICANT TREES



## SIGNIFICANT TREES







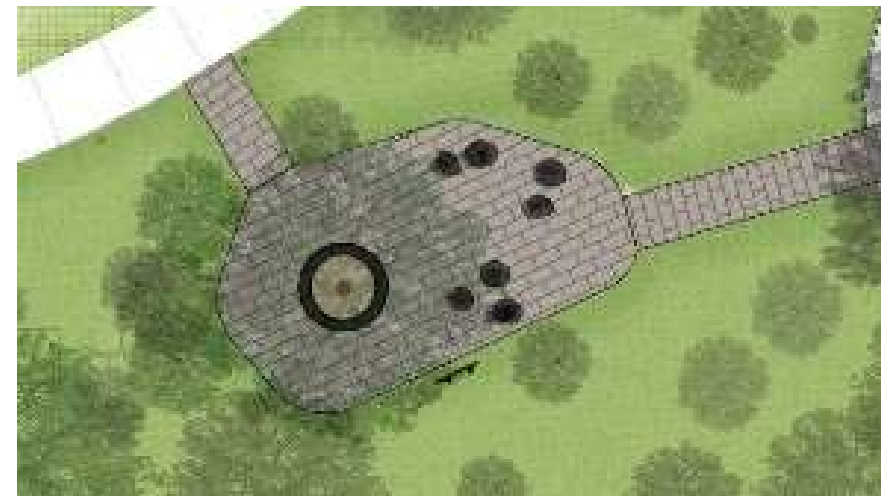
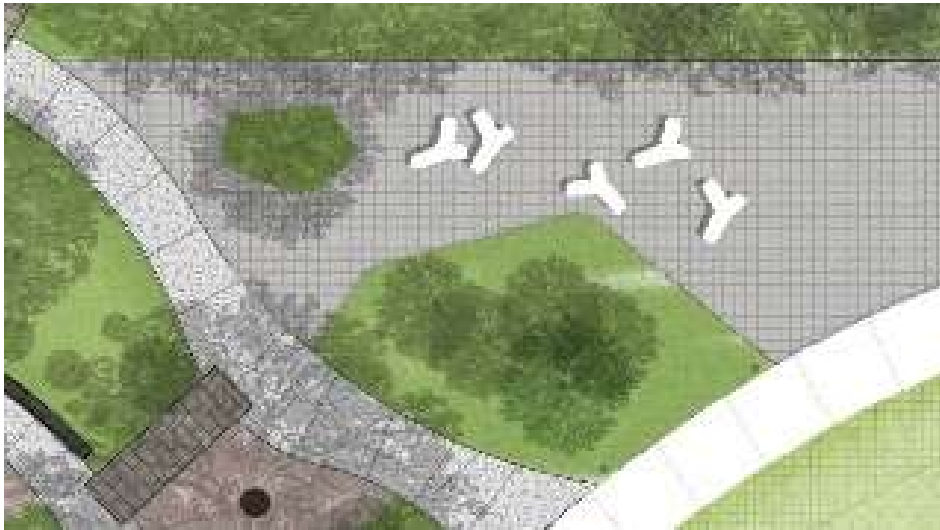
# CHILDREN'S GARDEN AT PLAZA



## CHILDREN'S GARDEN AT HERITAGE PLAZA

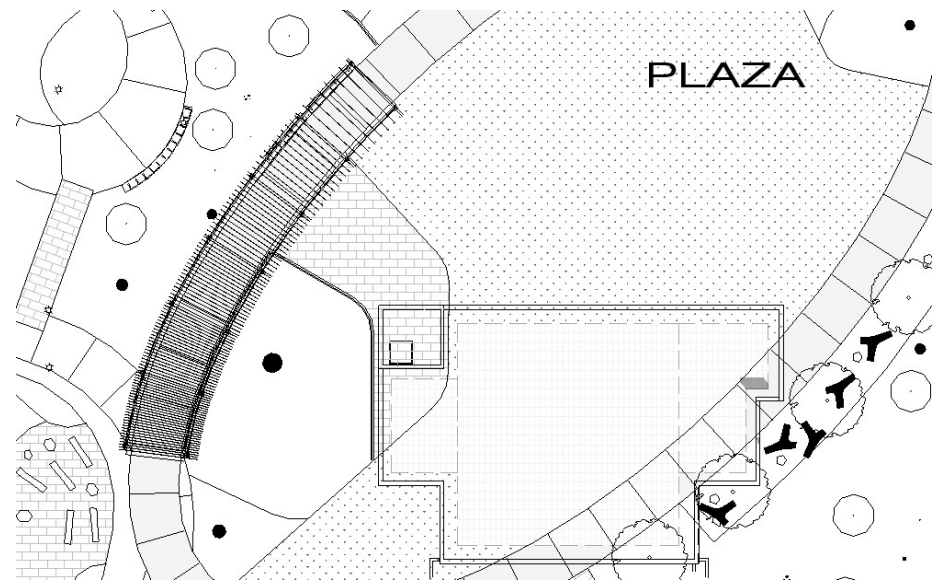
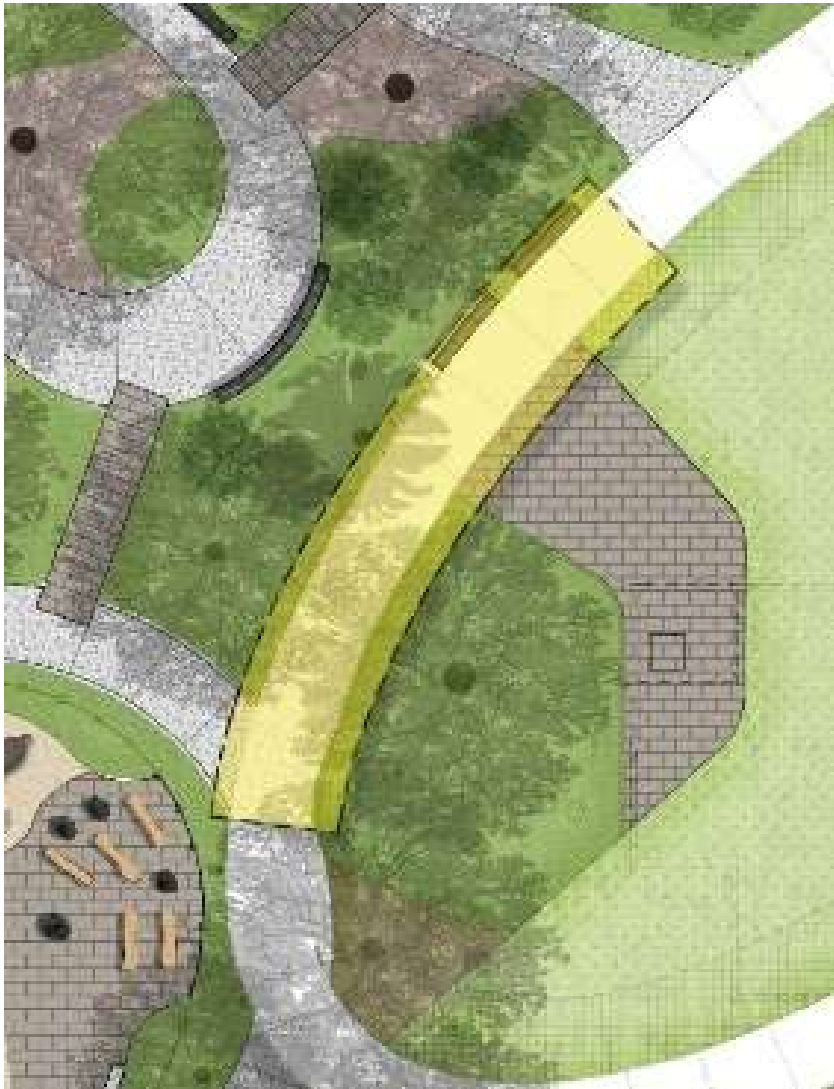


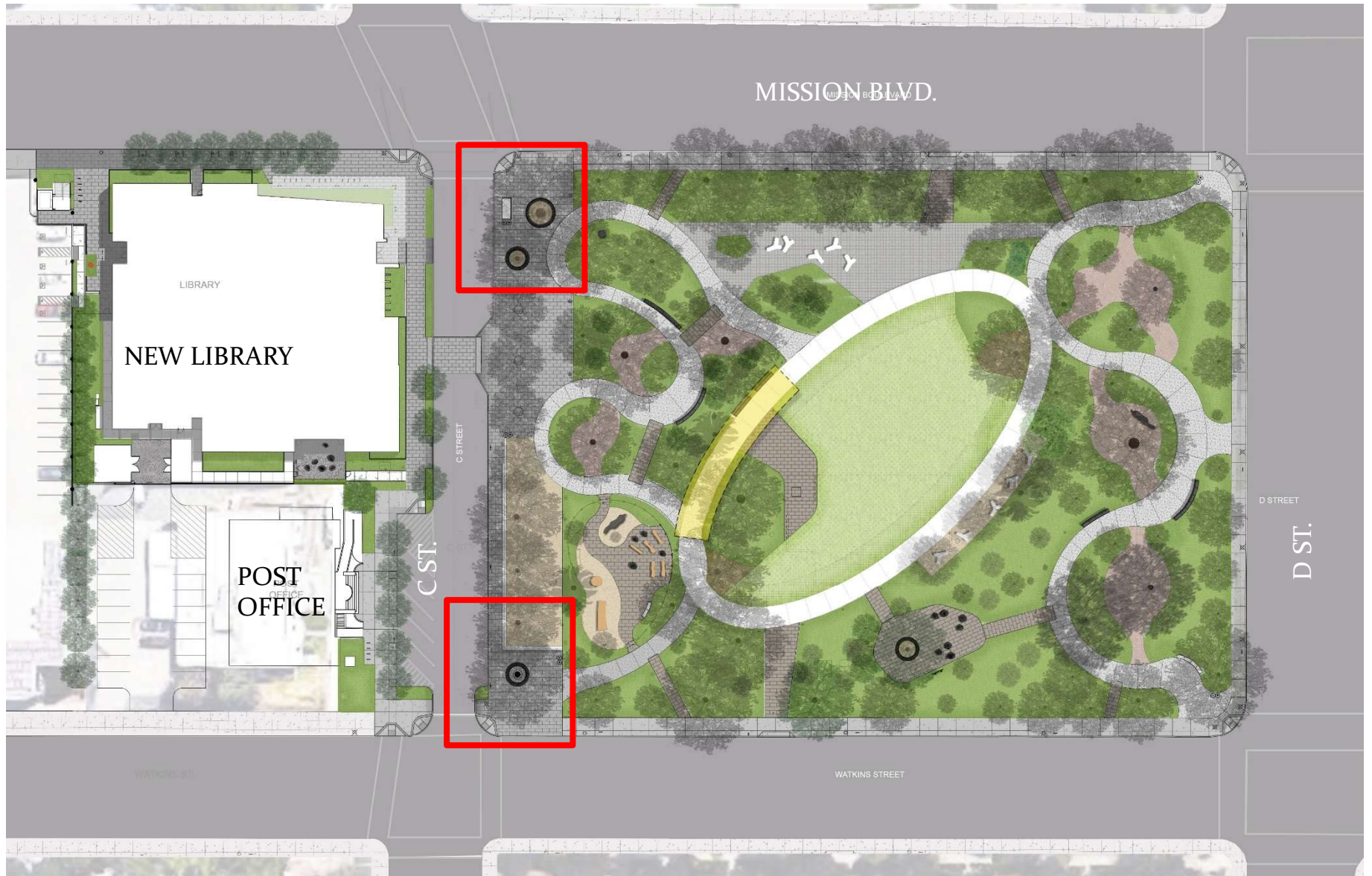
# OUTDOOR SEATING AREAS



## OUTDOOR SEATING AREAS







## ENTRANCES TO PLAZA AT C STREET







## RECYCLED PRODUCT SEATING WITH ARMS

rhaa  
Innovative Recycled Architecture

NOLL & TAM  
ARCHITECTS

10 July 2018



# SCULPTURAL FURNITURE



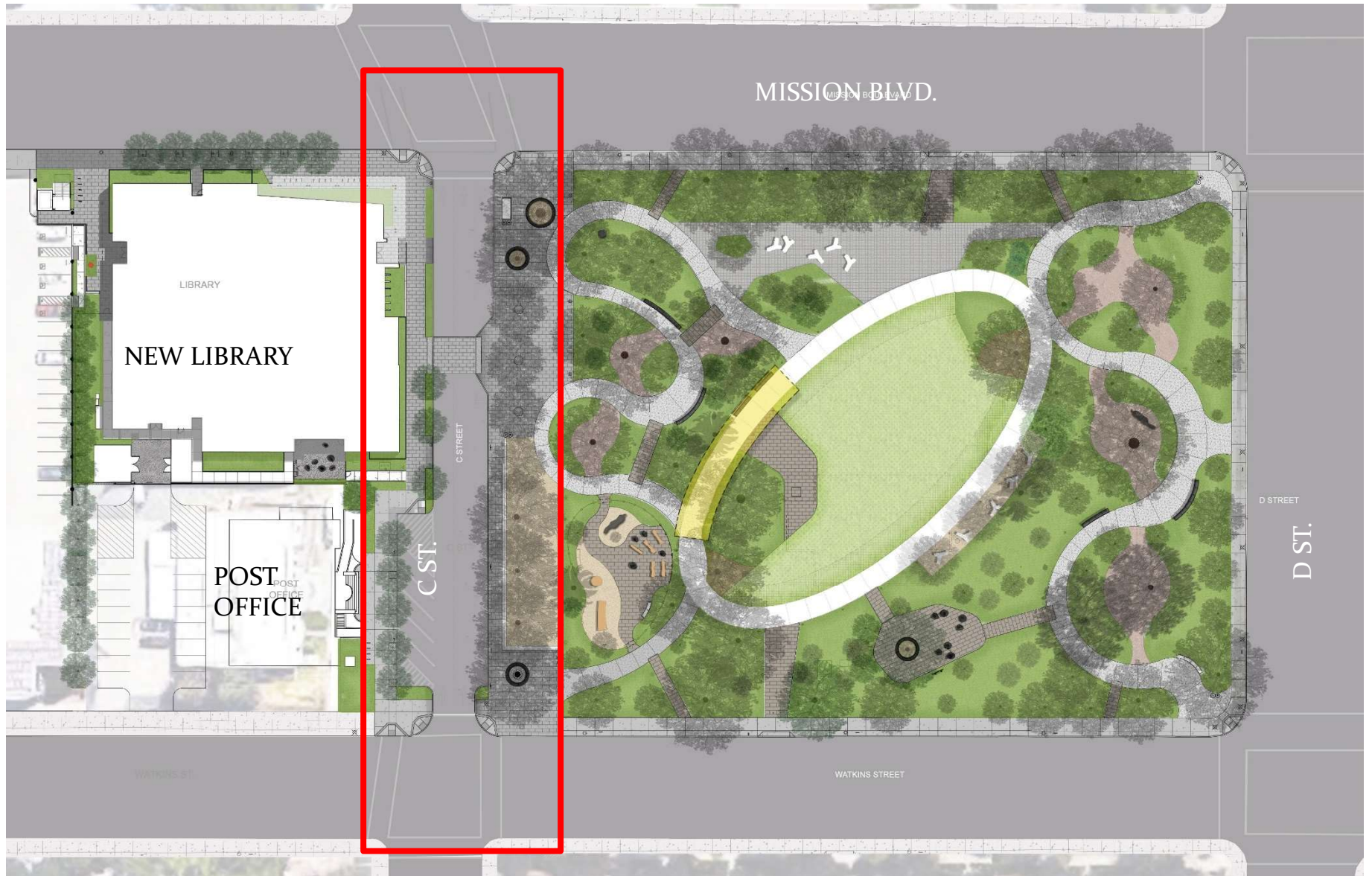
JAPANESE AMERICAN  
INTERNMENT MEMORIAL  
MARKER, PREFERRED LOCATION



<p><b>1800 - 1820s</b> Henry Shaw grows up in England and comes to St. Louis to start a hardware business.</p>  <p>Henry Shaw, 1813 Hardware Store 1808, 1818, 1820</p>	<p><b>1820s</b> Shaw first sees the land where the Garden will be located.</p>  <p>Henry Shaw Introduction of planting of Horae Stone, 1821</p>	<p><b>1840 - 1851</b> Shaw retires and travels abroad to attend the first World's Fair in London. Visits the Royal Gardens at Kew and the Crystal Palace Exhibition, as well as Chisworth Gardens, inspiring the creation of his own Garden in St. Louis.</p>  <p>Crystal Palace 1851</p>	<p><b>1859</b> Museum Building constructed.</p>  <p>Museum Building 1859</p>	<p><b>1860 - 1889</b> The Garden begins to take shape during Shaw's lifetime.</p>  <p>Garden of Horae 1860-1889</p>	<p><b>1889</b> August 25, 1889 Shaw Dies</p>  <p>Shaw Dies 1889</p>	<p><b>1889 - 1915</b> The Garden is open two Sundays a year and for flower shows. The garden was finally opened an every Sunday in 1915. Today the garden is open year round.</p>  <p>Garden 1889-1915</p>
-----------------------------------------------------------------------------------------------------------------------------------------------------------------------------------------------------------------------------------------------------------------------	--------------------------------------------------------------------------------------------------------------------------------------------------------------------------------------------------------------------------------------------	--------------------------------------------------------------------------------------------------------------------------------------------------------------------------------------------------------------------------------------------------------------------------------------------------------------------------------------------------------------------------------------	-------------------------------------------------------------------------------------------------------------------------------------------------------------------------	----------------------------------------------------------------------------------------------------------------------------------------------------------------------------------------------------------------	----------------------------------------------------------------------------------------------------------------------------------------------------------------	-------------------------------------------------------------------------------------------------------------------------------------------------------------------------------------------------------------------------------------------------------------------------------------------------------



## HISTORICAL INTERPRETIVE ELEMENTS CONSERVED & NEW SIGNAGE, MARKERS & MONUMENTS

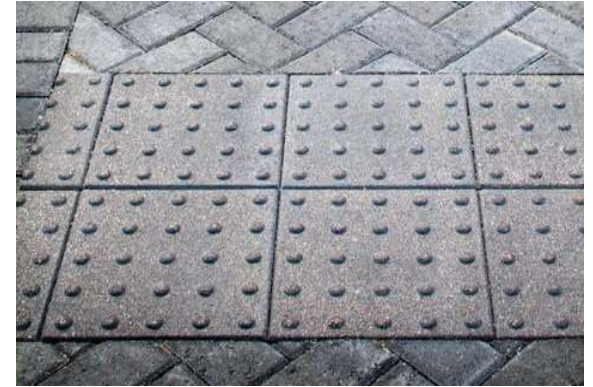
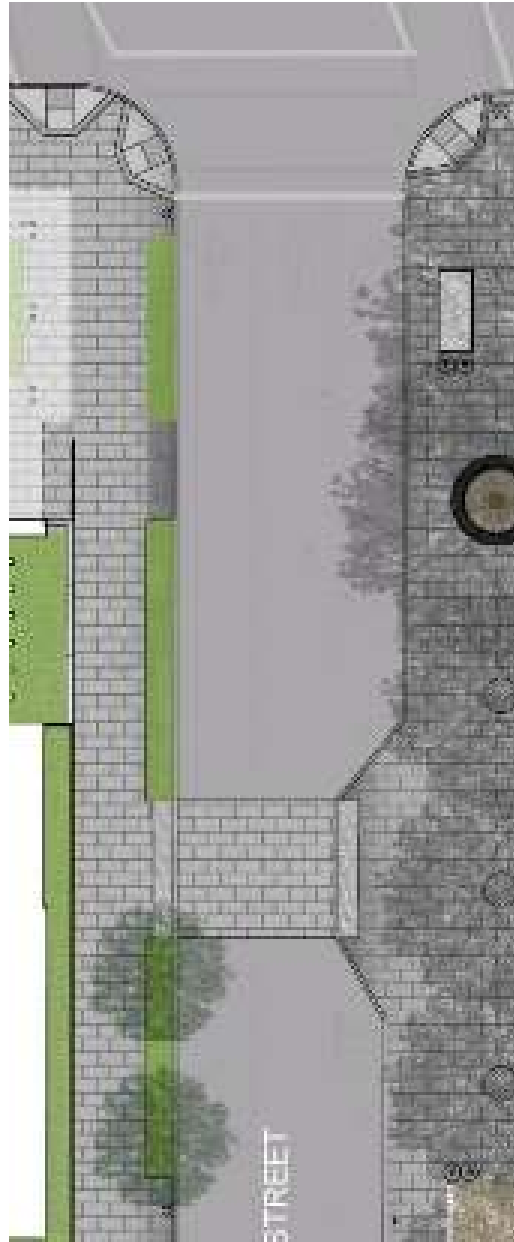


# C ST. STREETSCAPE DESIGN



## PLAZA & C STREET

rhaa | NOLL & TAM | 10 July 2018  
ARCHITECTS



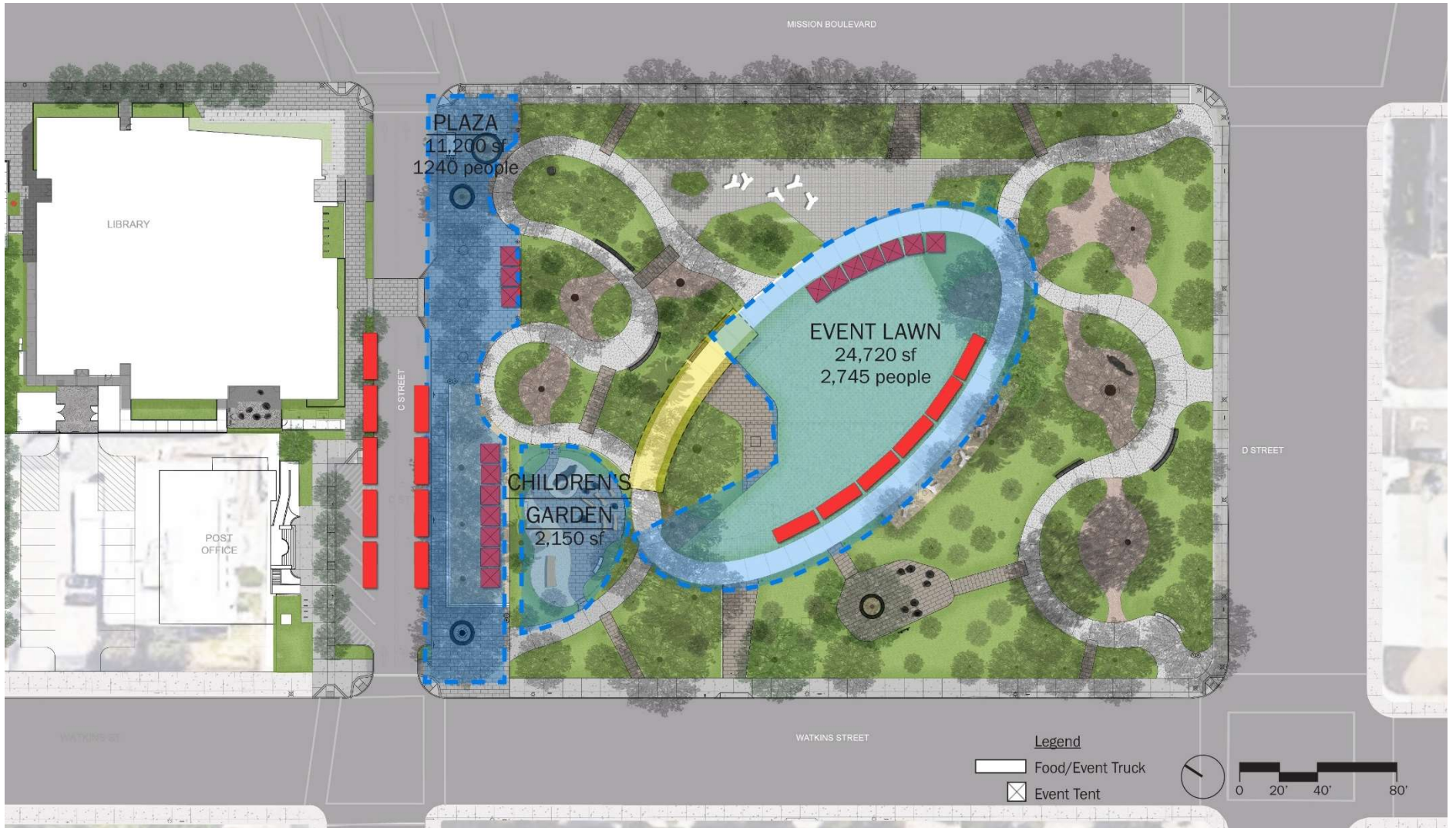
## C ST. STREETScape DESIGN

rhaa  
Innovative. Collaborative. Sustainable.

NOLL & TAM  
ARCHITECTS

10 July 2018





# PROGRAMMING DIAGRAM







## QUESTIONS

| NOLL & TAM | 10 July 2018  
ARCHITECTS